

COMMUNITY LINKS AND HUMAN EMPOWERMENT INITIATIVE (CLHEI)



ANNUAL REPORT 2021



SOCIAL MEDIA HANDLES

FACEBOOK: @communitylinks.org **TWITTER:** @LinksNig
LINKEDIN: Community Links NG **WEBSITE:** www.communitylinks.org.ng
EMAIL: communitylinks11@gmail.com **PHONE:** 07037724378

OFFICE ADDRESS

No. 2 Gordon Esa Street, Off Atom Kpera Road, Ankpa Quarters,
Makurdi, Benue State, Nigeria.

CONTENTS

ABOUT THE ORGANIZATION

MESSAGE FROM THE EXECUTIVE DIRECTOR

A LOOK INTO 2021

2021 DONOR –FUNDED PROJECT AREAS

2021 CLHEI-FUNDED ACTIVITIES

Disaster Management & Humanitarian Response Activities

Health & Human Development Activities

Democracy & Governance Activities

Climate & Environment

Christmas Kitchen 2021

ABOUT THE ORGANIZATION

Community Links and Human Empowerment Initiative (CLHEI) is a non-governmental organization that seeks to complement government efforts by reaching out to people in communities and grassroots level, with a vision to create a self-reliant society where individuals and groups explore their inner resources with the aim of realizing their full potentials.

CLHEI was founded in January 2006 and was registered on 18th Oct.2010 with Corporate Affairs Commission with registration number CAC/IT/N0 41255. The organization's Duns Number is 561202228. CLHEI has a working relationship Memorandum of Understanding with the Federal Republic of Nigeria under the ministry of Finance, Budget and National Planning.

CLHEI have worked extensively in the North Central and North East of Nigeria. With her presence in all north central states and offices in FCT, Benue, Nasarawa and Adamawa states, CLHEI has worked with vulnerable persons especially the Internally Displaced Persons (IDPs), Children, widows, and the refugees.

VISION

A self-reliant society where individuals and groups explore their inner resources, realizing their innate potentials for total well-being and a just society

MISSION STATEMENT

To work with the vulnerable towards advancing, exploring and maximizing their abilities and capabilities for sustainable self-reliance.

VALUES/STANDARD

- **Professionalism:** We believe in standards and best Practices.
- **Good attitude:** Maintain a positive disposition in thought, speech and action
- **Equity and Inclusiveness:** *We leave no one behind*
- **Transparency:** We hide nothing.

MOTTO

- "Linking Communities-Changing Lives"

MESSAGE FROM THE EXECUTIVE DIRECTOR

Dear Friends & Partners,
2021 has been a successful year for the organization and a year of refreshing as we were hugely deliberate in our efforts to strengthen on the systems, structures, & policies of the organization and build the capacity of our workforce to meet international standards and best practices. These efforts were highly rewarded given the quality of our work and effectiveness in our responses and interventions.

In a bid to reposition CLHEI, a strategic plan for 2019 – 2023 was reviewed. It is hoped that it will direct the organizations interventions and inspire all stakeholders to support her vision.

I would like to thank the staff of CLHEI for their unwavering commitment to excellence and immense contributions to the successes recorded during the year. Finally, my thanks go to the Board of Trustees who have been like the proverbial light, ever providing direction and guidance to the CLHEI Team. I would not forget to thank all our donors and partners without whom we would not be able to advance our mission.

A LOOK INTO 2021

The year 2021 was a post pandemic year with salient prospects and a lot to reckon with however. The pandemic transited into various waves and variance dominating the international, national, state and communities. A large population of Nigerians and the international society had found very stiff to see through and would describe as an unimaginable one year with numerous hope. There were relatively reduced death cases of COVID-19 and a significant number of Adverse Events of Special Interest and Adverse Events Following Immunization since the acceptance of the COVID-19 vaccines had improved due to sensitizations and awareness created by key actors and stakeholders across the globe. There was an increase in Gender Based Violence especially in rape cases, increase in unemployment and hunger as well as human rights violations accompanied by insecurity, climate and humanitarian crisis in the communities.

Benue state had seen stunted growth in agricultural productivity per annual yield, low GDP and per capital income, and a drastic increase in vulnerability to poverty, Climate and humanitarian crisis; leading to increase displacement and the need for interventions and responses

to improve livelihood, food security, health care, Good governance and protection against human rights and violations.

CLHEI had harnessed the opportunities abound to embark on advocacies, sensitizations, capacity building as well as strategic engagements around the vulnerable populations in urban and suburban communities to improve resilience and coping capacities of the marginalized populations. Continuous sensitizations around COVID-19 and other critical ailments, Substance use and abuse, Gender Based Violence, human rights violation, environmental protection, disease prevention, Climate change mitigation, adaptation and resilience measures were carried out deliberately, in communities and some selected Local Government areas in Benue state. This was to respond to the challenges that confront young girls, women, persons living with disabilities internally displaced persons, the youths inclusively across the state; especially in hard to reach areas of Benue state, North Central Nigeria.

2021 DONOR-FUNDED PROJECTS DISASTER & HUMANITARIAN RESPONSE

C19 COVID PROJECTS

Benue State is challenged with a complex emergency which includes violent conflict, social inequalities and underlying poverty exacerbated by natural hazards including flood and diseases such as HIV/AIDS, malaria and other health conditions such as malnutrition. The underlying factors have contributed to the widespread displacement witnessed across the state leaving over 400,000 IDPs across the state largely in Agatu, Guma, Makurdi, Logo, Kwande, Konshisha, Gwer West, & Oju LGAs.

The complexities of emergencies faced with minimal response by the government at the state and local level have continued to create the need for external support to reach the vulnerable and marginalized in hard-to-reach communities in the state. The cost of medical care at the urban centres have witnessed a spike due to the increased costs of PPEs and pharmaceuticals, similarly, the Primary Healthcare facilities especially at the rural centres have witnessed a decline in clinical visits either due to lack of adequate protection for personnel which had caused limited service provision or a lack of funds to acquire medical services for interior rural dwellers.

COVID APPEAL FUND PROJECT: OCT 2020 – FEB 2021

Project Name: Preparedness and response to primary and secondary impacts of COVID-19 on the most vulnerable populations in Nigeria

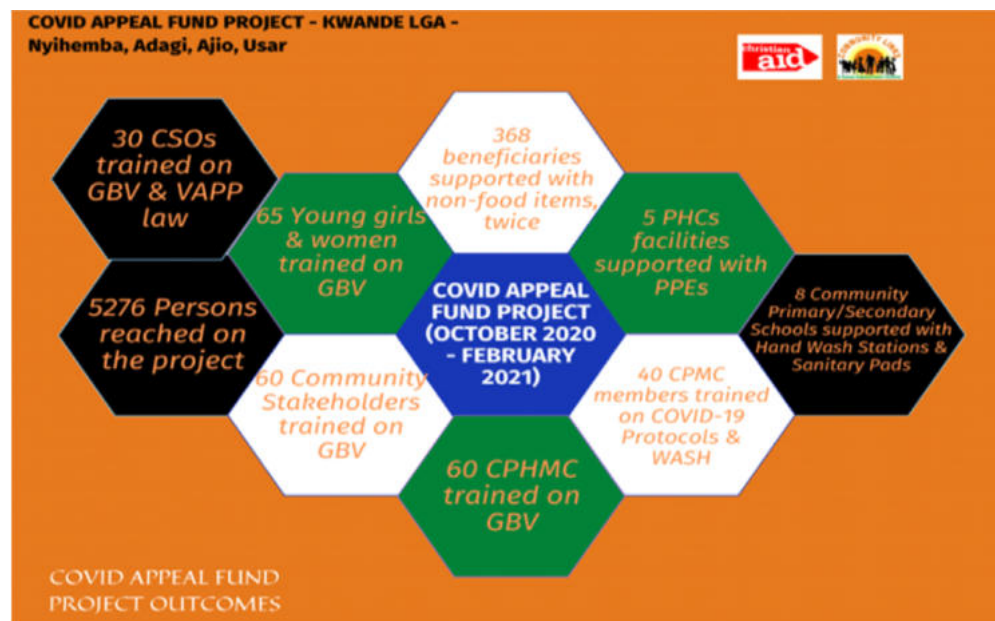
Project Objective:

The C19 NALPER Project funded by Christian Aid (CAID) and implemented by CLHEI sought to improve living conditions of IDPs, Returnees and Vulnerable populations in 4 communities in Kwande LGA (Ajio, Nyihemba, Usar & Adagi) of Benue State who have been

deeply affected by the Lock Down incurred due to the Corona Virus Outbreak in the following key areas:

- Livelihood (NFIs)
- Health
- Wash
- Gender and Protection
- Accountability

The project empowered stakeholders and civil society organizations (CSOs) through training on Gender-Based Violence; supported the overall COVID-19 strategy through the provision of non-food items, water guard kits and vigorous sensitizations on personal hygiene; supported Primary Healthcare Centres with PPEs like latex gloves, hand wash stations, Chlorine among other items to help improve healthcare delivery. The response actively collaborated with the Ministry of Health through the EOC to convey key messages in terms of available testing and isolation centers, with emergency numbers distributed during sensitization activities.



COVID START FUND PROJECT: DEC 2020 – JAN 2021

Project Name: Preparedness and response to primary and secondary impacts of COVID-19 on the most vulnerable populations in Nigeria

Project Objective:

The C19 NALPER Project funded by Christian Aid & Start Fund and implemented by CLHEI sought to improve living conditions of IDPs, Returnees and Vulnerable populations in 9 communities across Vandeikya, Okpokwu & Ogbadibo LGAs of Benue State who have been deeply affected by the Lock Down incurred due to the Corona Virus Outbreak in the following key areas:

- Livelihood (NFIs/CASH)
- Health
- Wash
- Gender and Protection
- Accountability



TYDF ECCDC PROJECT

CLHEI had conducted a baseline assessment at LGEA Township Primary School, Adikpo, Kwande LGA, Benue State and discovered that the blocks of classroom housing the students and the teachers were obsolete, uninhabitable and very unattractive to be used for learning; thus, constituting an impediment or obstruction for the desired learning to take place. There was therefore every need to intervene in the school. Thus CLHEI submitted a concept note to TYDF to enable her renovate the three blocks that were in a bad state. TY Danjuma Foundation (TYDF) reviewed the concept note and awarded a discretional grant to CLHEI to renovate one block only.



The Executive Director of CLHEI explained the poor state of school infrastructures within Kwande LGA said that the worst of them was LGEA Township Primary School, Adikpo which was why a proposal was sent to TYDF to source for funds that will enable CLHEI renovate all the dilapidated blocks of classrooms in the school. However, due to paucity of funds, TYDF awarded a Discretionary Grant (DG) and the Kindergarten block was renovated to provide a conducive learning environment for the pupils.

The handing over ceremony of the renovated block for kindergarten was done on the 21st of April, 2021 at LGEA Township Primary School Adikpo Premises. In Attendance were Staff of TYDF, ES, Kwande LGA, PTA Chairman, Executive Director (ED) and staff of CLHEI, a representative of the Executive Chairman, Kwande LGA and the headmaster and staff of LGEA Township Primary School, Adikpo.

The representatives of the ES, Chairman, and PTA all thanked CLHEI and TYDF for a good work done on the block. Staff of TYDF were satisfied with the quality of work done on the renovated block despite the fact that the fund was small. The Headmaster and staff of LGEA Township primary School, Adikpo were delighted that the project was done in their school and promised to judiciously utilize the project. The project was handed over to the school officially by Staff of TYDF.





**BEFORE THE
INTERVENTION**



DURING THE INTERVENTION



COMPLETED WORK



APIN ICARES PROJECT

Community Links & Human Empowerment Initiative (CLHEI) has strengthened her efforts in supporting beneficiaries to achieve 100% need-based services in a timely, context-sensitive, individualized and family centered manner, this is achieved through collaboration with key services providers, Communities gate keeper sand Government stakeholders in order to achieve Community interventions activities and Health facility comprehensive treatment support to beneficiaries with emphasis on the provision of appropriate services as well as quality HES support which will excel to a strong sustainability and resilience to households at the exit of the project.

CLHEI over time has worked with the Community existing structures which include:

Community and Facility Club meetings which serves as platform where activities are facilitated to educate beneficiaries, experiences sharing, discussion on healthy living, drug adherence and viral suppression

Use of peer to peer learning session, one on one and groups counselling as forum to discuss self-stigma and other forms of stigma and discrimination, these also helps in achieving drug adherence and viral suppression among CLHIV/ALHIV.

Use of facilitation Job Aids (manuals) (Adherence, Adolescent Package of care for comprehensive treatment outcome and among other HIV preventive messages etc) during Adult and Adolescents Support/Club meetings both at the Facility and the Community.

Community Quality Improvement Team (CQIT) and Child protection Committee (CPC) serves as a platform to engage community stakeholders for dialogue and sensitization on sigma and discrimination and issues of child protection on Orphan and Vulnerable Children on iCARES project.

Work in collaboration with prevention team to ensure children who are Negative after six months and those with unknown HIV status are risk assessed and tested by

community testers assigned to CLHEI. through the Social welfare at the local Government level and Ministry for Women Affairs and Social Development, coordinating referrals and linkages which OVC program provide home visit monitoring and facility tracking for holistic support for a better treatment outcome for beneficiaries, other activities includes Nutrition support, counseling support, HIV/AIDS treatment linkages and retention for viral suppression, HES intervention, HIV, sexual and reproductive health services and protection and education services, Psychosocial support activities for her OVCs beneficiaries etc.

FACTSHEET

CLHEI ensured retention of 365(M:163, F:202) HIV+ OVC on treatment to attain Viral suppression, with 330 (M:147, F:183) CLHIV documented on cascade has already attained Viral Suppression

= 1.1.1. Linkage Coordination: Optimization of target streams (ART, PMTCT, Key Population, HTS etc.) for identification and enrolment of eligible beneficiaries

= 64 (M:27, F:37) Children of Key Population were enrolled
= 186(M:103, F:83) Children Orphans by AIDs and 149 Females at Risk of Transactional Sex were enrolled

= 643(M:296, F:347) were risk assessed and were all at risk and therefore referred for HIV Testing Services (HTS) accordingly

= 326(M:143, F:175) beneficiaries were tested, one tested HIV positive and he was linked to ART at Mayange Primary Health Care

This was done for all 365 (M:163, F:202) CLHIV on the program.

= A total of 567 (F: 541, M: 26) caregivers and 365 (F: 202, M: 163) Cs were followed up and provided counseling.

= CLHEI monitored 4284 OVC (M:2226, F:2068) in order to

identify undernourished children and provide targeted nutrition counseling as well as link to other food support programs and supplementation.

During the reporting period, about 480 (M: 461, F:19) care givers were sensitized on personal hygiene and keeping the breast neat to avoid infection.

During the reporting period, 1185 (M:614, F:576) beneficiaries were sensitized.

= **239 GBV screening tools** was administered with sex disaggregation of **M: 86 F:153** for active GBV case findings and responses to violence against children

= A total of 120 care givers participated in these sessions with sex disaggregation of **M: 5 F: 115** and a total of

= 103 caregivers completing 10hours session of the gender norms intervention with sex disaggregation of **M: 5 F: 98**.

= A total of **291(M=4 F=287)** care givers were sensitized on the importance of birth certificates as well as how to ensure that the rights of their children are not abuse or violated.

integrated child rights sensitization during kids/adolescent club meetings in all the communities of her intervention - **430** VCs were reached with sex disaggregation of **F=257 M=173**.

= (CLHEI) had sensitized her beneficiaries on succession planning and will writing during home visits and care givers' forum. **118 (F:100, M:18)** were sensitized and encourage to document their will

HEALTH & HUMAN DEVELOPMENT TRAININGS/ CAPACITY BUILDING FOR PREPAREDNESS IN HEALTH EMERGENCIES

CAPACITY BUILDING ON BREAST CANCER

Team CLHEI embarked on a capacity building strategy for preparedness and awareness through educating, and improving the capacity of over seven staff and volunteers and awareness of staffs and volunteers on the menace of breast cancer, the symptoms, risk factors, early detection, prevention and treatment of breast cancer.

SENSITIZATIONS FOR EARLY WARNING & EARLY RESPONSE IN HEALTH EMERGENCIES

BREAST AND CERVICAL CANCER SENSITIZATION

The most important cause of premature mortality among women in the world is breast and cervical cancer making both cancers a major health problem for the women and the nation at large. Globally, the incidence and mortality of breast and cervical cancer have increased over the past three decades with an estimated annual rate of 3.1% and 1.8% respectively. In Nigeria, cervical and breast cancer are major public health challenges. CLHEI team health was able to carry out sensitization among school children and teachers; creating awareness on cervical and breast cancer with the students of ECWA Secondary School, North bank Makurdi, Benue state.

- 30 students and 5 teachers sensitized on cervical breast cancer.
- 35 Participants were enlightened on how to prevent breast and cervical cancer.
- 35 Participants learnt how to do a self-breast examination and how to observe their breast and cervix for signs and symptoms of cancer.



CAPACITY BUILDING ON MENSTRUAL HYGIENE

Poor menstrual hygiene caused by a lack of education on the issue, persisting taboos and stigma, limited access to hygienic menstrual products and poor sanitation infrastructure undermines the educational opportunities, health and overall social status of women and girls around the world. As a result women and girls are kept from reaching their full potential. It is at this instance that in-house staff training on "MENSTRUAL HYGIENE MANAGEMENT" was conducted with the Health and Human Development Thematic Unit.

HIGHLIGHTS:

The following were the highlights of the training.

- The meaning of gender and gender roles
- Different biological make-up of the male and female gender
- Menstruation and the reason why it happens
- Menstrual cycle
- Menstrual management
- Menstrual waste disposal



CAPACITY BUILDING/SENSITIZATION ON FAMILY PLANNING

CLHEI had participant's capacity built and strengthened to create awareness and sensitize people on the importance of family planning, its benefits, prevention and control of unintended/unwanted pregnancies through family planning methods and most importantly the prevention of abortion.

The training on family planning had emphasis on the importance and benefits of family planning. "The ability to time and space children reduces fetal, infant and maternal mortality and morbidity by preventing unintended and high risk pregnancies". Unintended pregnancies are pregnancies that are mistimed or unplanned as at the time of conception which is as a result of sexual activities without the use of effective contraception through choice or coercion. While unwanted pregnancy is that which the woman does not want to be pregnant or have any more children

Preventing unintended/unwanted pregnancies, the effective use of latex condoms can reduce the transmission of sexually transmitted diseases (STDs). The availability and appropriate use of contraception can also reduce abortion rates since a large percentage of unintended pregnancies result in abortion.

More so, couples who are able to plan their families, experience less physical, emotional and financial strain; have more time and energy for personal and family development; and have more economic opportunities. The risk factors associated with unintended pregnancies includes; contraceptive failure, non-use of contraceptive services, rape, infertility, lack of awareness and maternal deaths.

Women and men may experience a number of barriers when trying to obtain family planning services which include lack of awareness of the availability of services, distance to family planning provider, concerns about confidentiality etc. another major barrier also include religious barrier which is most common in the northern part of the country.



IN-HOUSE CAPACITY STRENGTHENING ON NEW TRENDS ON HIV/AIDS

The main purpose of this training was to train participants on what HIV/AIDS is all about, educate participant on mode of transmission of HIV/AIDS, educate participants on new trends of HIV/AIDS. As well train participants on psychosocial support for adolescents living with HIV/AIDS.



OUTCOMES

- Participants had improved knowledge on what HIV/AIDS is about
- Participants had improved knowledge on the need not to stigmatize people living with HIV/AIDS
- Participants learnt psychosocial support and care they can give to people living with HIV/AIDS

SENSITIZATION ON GBV AT UBE ST.MARY MAKURDI

With the aim to strengthen the response to Gender Based Violence and reduce cases of GBV in Benue state, CLHEI had conducted trainings for 50 students and 2 teachers. Participants were sensitized on Gender Based Violence. The training has availed the population with an understanding of how to tackle GBV issues (the need to speak out) fundamental human rights and the VAAP Law. CLHEI has also made efforts to avail SOPs to enlighten staffs and volunteers on how to address issues of GBV within and outside the organization.

Violence against women and girls is one of the most prevalent human rights violations in the world. Gender Based Violence undermines the health, dignity, security and autonomy of its victims, yet it remains shrouded in a culture of silence. Victims of violence can suffer sexual and reproductive health consequences, including forced and unwanted pregnancies, sexually transmitted infections including HIV and even death. The issue of Gender Based Violence reaches every corner of the world.

According to the World Health Organization (WHO) data from 2013, one in every three women has been beaten, coerced into sex or abused in some other way- most often by someone she knows. One in five women is sexually abused as a child according to a 2014 report. In regards to this, the organization carried out training at UBE St. Mary's North bank to sensitize student and teachers on GBV and the limitations of gender roles on the society and especially the female child.



CAPACITY BUILDING ON TAILORED FERTILIZER RECOMMENDATION

Agriculture in Nigeria is made up of four sub-activities: Crop Production, Livestock, Forestry and Fishing. While the Nigeria economy is heavily dependent on oil, agriculture still contributes a significant amount to Nigeria's economy.

Good agricultural practices can result to high yields likewise bad agricultural procedures can lead to fatal and total loss of investment. It is necessary therefore, to train farmers, agricultural extension agents and other interested organizations on the practical steps to follow to achieve optimum yield in the farmlands.

An AKILIMO representative from IITA trained 13 staff of Community Links and Human Empowerment Initiative on Tailored Fertilizer recommendations which exposed participants to the dos and don'ts of agricultural practices and the Cost-benefit analysis framework.

The essence of the training is to equip staffs with the skills necessary to train farmers and agricultural extension agents to produce good yields (Crops) from the farm and also prevent environmental degradation such poor soil fertility and erosion



DEMOCRACY & GOVERNANCE

SENSITIZATION ON ELECTORAL PROCESSES AT BAM-BAM COMMUNITY

Over the years, electoral processes in the history of Nigeria's democratic governance have continued to be marred by extra ordinary displays of rigging, thuggery, "do or die" affairs, ballot snatching at gun points, violence and acrimony, boycotts, threats and criminal manipulations of voter's list, falsification of election results, the use of security agencies against political opponents and the intimidation of voters.

In fact, elections remain one of the leading sources of conflict which often result to confrontations that continue to threaten the political stability and peace of the nation. As we strive to achieve a free and fair election 2023, CLHEI carried out training with Bam-Bam community behind modern market, Makurdi to create awareness on electoral processes to;

- Advocate for a free and fair election.
- Tackle misconduct of youth during electoral process
- Encourage women participation in electoral process
- To increase the number of citizens with the voter ID cards



A total number of 30 men, women and youths were sensitized on electoral processes including how to tackle election malpractices in Benue State and also enlightened on their fundamental human rights.

CLIMATE & ENVIRONMENT



COP 26

Climate change has moved beyond being a fringe issue to a global priority. Global leaders converged in Glasgow to negotiate critical issues on climate change. CLHEI was ably represented at the International front by the Executive Director, Dr. Helen TeghTegh, and locally via side events.

CLHEI joined leaders from over 200 countries across the world to brainstorm the best measures to combat global warming during the just concluded 26th session of the Conference of Parties (#COP26); UN's framework convention on climate change

CLHEI continues to restate her bold commitment to partner and implement climate change strategies at the grassroots level and in hard-to-reach communities across Nigeria.



CLHEI CLIMATE SOLUTIONS AMONG DISPLACED POPULATIONS

Benue people are today faced with great ecological and climatic problems. The most recent are the flood disaster resulting from the over flow of river Benue and incessant conflicts between farmers and herdsman. Benue State is an agrarian society with rapid population growth. One of the adverse effects of climate change in northern Nigeria is desert encroachment. This has led to migration of herdsman southwards in search of pasture for their cattle causing undue pressure on lands for farming and grazing activities for farmers and the herdsman. The result has been constant and frequent violent conflicts between the two groups displacing over an estimated population of 1.7m people in the process.

In this theatre of violence, CLHEI implemented climate interventions among displaced populations living in Abagena IDP Camp in Makurdi LGA of Benue State. Following the increased demand for firewood and limited access to livelihood opportunities, a majority of the IDPs engage in felling of trees in order to fetch firewood either for sale or for domestic use. This was as a result of the increasing cost of fossil fuel in the market and limited livelihood opportunities within the camp and the host community. Our baseline findings indicated that camp lightning and cooking fuel stood out as the major challenges that the IDPs faced in the camp which are basic needs yet to be met. Therefore, following a needs-based intervention approach, the project intervention was designed to respond to the need for alternative cooking fuel & also camp lightning.

With support from **ELECTRIC AID & CHRISTIAN AID**

through our Humanitarian response and Disaster management thematic area, In response to the challenges faced by IDPs around the use of firewood for cooking and to further contribute in the advocacy for the reduction in deforestation and felling of trees with its attendant effect on climate change and greenhouse effects, CLHEI initiated the idea of locally fabricated stoves that will utilize rice husks as the basic source of cooking fuel.



Fabricated cooking stoves and cooking pots for 60 IDP households at Abagena IDP Camp in Benue State

This was borne out of the idea to reduce total dependence on firewood with its daunting effect on the environment, the challenges encountered by the IDPs in the search of firewood for cooking in far away hinterlands around the host community, as well as the potential to recycle rice husks through the use of local binders to mould briquettes which will serve as alternative cooking fuel for IDPs.



Rice husks recycled through the use of local binders as alternative cooking fuel



Consequently, CLHEI donated 60 fabricated stoves to 60 IDP households living in Abagena IDP camp in Makurdi LGA of Benue State.



IDP woman lighting up the fabricated cooking stove using rice husks

CHRISTMAS KITCHEN 2021

Hunger is quickly becoming the biggest problem faced by scores of women & children living in IDP Camps. Even during the yuletide season, IDPs do not experience the satisfaction of a good meal. During our last intervention at the Ortese IDP Camp, Tomna (a 4year old boy) would say to us "Christmas makes no difference to me; I would still have little or nothing to eat".

Assessments carried out also revealed that Ortese IDP Camp happens to be the largest unofficial camp in Benue State with a total population of 16,344 (individuals) and made up of 3,266 households. Out of this population, records revealed over 387 lactating mothers with children from 0-3months old who scarcely had food to eat to stay healthy and also feed their babies.

As part of activities to mark the 2021 Christmas Kitchen Project, CLHEI distributed 134 bags of Rice, Maggi, Tomato Paste, Salt and clothes to 134 households drawn from Nasarawa (Awe, Tudun-Kaure, Obi & Wamba Communities) and Benue State (Ortese IDP Camp).

At CLHEI, Christmas Kitchen is one of our many ways of reaching out to vulnerable groups & indigent persons in different locations where we share food and non-food items with identified persons. Since the

inception of the organization this has been a yearly practice to share together in the spirit of Christmas; a humanitarian response for 15years running now.

Next Year 2022, our budget is set at N9, 942,250. This will enable us reach out to 1000 vulnerable households drawn from selected communities in Benue & Nasarawa States; IDPs, the aged, persons living with disabilities and widows. Each household identified will get a pack comprising: 10kg of Rice, 10kg of Garri, 1litre of Groundnut Oil, 1 roll of Tomato paste, 1pack of Maggi, 1pack of salt and Onions.

You can also get involved by simply donating in cash or kind as we continue to strive to share in the spirit of Christmas with vulnerable & displaced populations.

All donations be made in favor of
COMMUNITY LINKS & HUMAN
EMPOWERMENT INITIATIVE

Account Number: **1217552430**

Bank: **Zenith**



Tomna walking across the camp to locate his mum



Christmas kitchen team arranging items for distribution flanked by beneficiaries



A group of lactating mothers looking as the stage is been set for the 2021 Christmas Kitchen distribution at the Ortese IDP Camp in Guma LGA, Benue State



A group photo of CLHEI Team & beneficiaries drawn from Awe, Tudun-Kaure, Obi & Wamba Communities during the 2021 Christmas Kitchen distribution in Lafia, Nasarawa State



A cross-section of beneficiaries standing beside their items received during the 2021 Christmas Kitchen distribution at the Ortese IDP Camp in Benue State



Arrangement of items for distribution by the CLHEI Christmas Kitchen Team during the 2021 Christmas Kitchen Activity in Ortese IDP Camp, Guma LGA of Benue State

NFI DISTRIBUTION IN COLLABORATION WITH UNITED HELPING HEARTS, TEXAS

CLHEI with the support of **United Helping Hearts, Texas** distributed non-food Items (NFIs) to displaced populations using International days as in-road to carry out these distributions.

CHILDREN'S DAY – MAY 27TH

In collaboration with **United Helping Heart, Texas** CLHEI was able to celebrate with Internally Displaced Persons (IDPs) through the distribution of NFIs across four IDP camps in Makurdi and Guma LGA namely, NEPA quarters, Abagena, Daudu 1 and Uikpam camps.

The children's Day is celebrated every May 27th in Nigeria. It was first established by the United Nations in 1964, it marks the celebration of children, creating awareness for issues affecting children and helping us appreciate that they are the future of our society. CLHEI was out to celebrate this day with Internally Displaced Persons across four IDP camps in Makurdi and Guma LGA.

Team CLHEI were able to reach out to a total of 315 children through distribution of NFIs comprised of clothing and shoes while reaching out to over 1,200 children and adults through sensitizations on COVID-19 protocols and WASH practices using drama, tales, play group, Fashion parades and music for entertainment.

The purpose of the celebration with the children was to:

- Distribute Food and Non-Food Items
- Teach Sensitize children on COVID-19/WASH
- The children to work and live-in unity by engaging them in fun games and activities that will help them work together.

ABAGENA IDP Camp – 50 Children

NEPA QUARTERS IDP Camp – 85 Children

DAUDU 1 IDP CAMP – 60 Children

UKPIAM IDP Camp – 120 Children

A Total of 315 children



Children enjoying their moments during the Children's Day Celebration



Executive Director CLHEI, Dr. Helen Teghtegh dressing up a baby during the children's Day celebration



Volunteer dressing up a girl in preparation for fashion parade during the Children's Day Celebration



Children sharing gift-items in love during the Children's Day Celebration



A cross-section of children at the NEPA Quarters IDP Camp during the Children's Day Celebration

WORLD ENVIRONMENTAL DAY

Team CLHEI along other members of CSDevNet Benue chapter in their bit collaborated to commemorate the World Environmental Day with vigorous tree planting activities and round table talks to foster the way forward in tackling climate based issues affecting the common people in the communities and encourage climate mitigation and adaptation practices within the Makurdi town and environs on the 5th of June, 2021.

The team in collaboration with Faith based institutions, Academic institutions (Faculty of Environmental Management, Benue state University), Business premises, Responsive Residence and traditional palaces within Makurdi metropolis distributed over 150 trees including ornamental, economic and various species to be planted and nurtured by the beneficiaries which will be monitored strategically to follow up with the survival rates of the plant species and the impact of the strategy.



MOTHERS DAY CELEBRATION WITH IDP MOTHERS AND SENSITIZATION ON BREAST CANCER – 14TH JULY

Breast cancer is the most invasive cancer in women and the second leading cause of cancer deaths in women after lung cancer. Awareness for symptoms and the need for screening are important ways of reducing risk. In rare instances breast cancer can also affect men, which is why it was pertinent for CLHEI to carry out an awareness campaign and sensitization to IDPs in Makurdi (Federal Housing and NEPA Quarters, Daudu 1 and Abagana Camps).

The activities were aimed at creating awareness on breast cancer and additionally distribute 178 Women clothes to the above selected IDP camps within Makurdi, Benue state.

The Mother's Day focused on sensitization and awareness creation on Breast Cancer and distribution of NFIs (clothes, shoes and hand bags) to four selected camps within Makurdi

Three hundred and eleven (311) women were reached out at the various IDP camps with NFIs in Makurdi.



WORLD MENTAL HEALTH DAY - 10TH OCTOBER, 2020

One (1) out of every four (4) people suffer mental illness and in every moment, one (1) out of ten (10) is working through mental illness.

Mental illnesses are health conditions involving changing in emotion, thinking or behavior or a combination of these. The World Health Organization has set up 10th October of every year to commemorate World Mental Health Day.

The 2020 theme was mental health care for all; let's make it a reality. On that note, the organization keyed into activities organized by Civil Society Organization, Benue State chapter, at Elohim Development Foundation.

Through in-depth discussions the following outcomes were achieved;

Outcomes

- Participants were enlightened on the ability to better handle issues of stigmatization that is widely associated with mental illness and other health related issues.
- The activity propelled and equipped participants on creating awareness around mental health issues and to mobilize effort to support mental health.
- Participants learnt that accepting the mentally challenged as our problems and not their problems unify the society and bring about an end to

blaming and stigmatizing the mentally challenged.

- Participants understood how to draw up programs and seek funding to help assist the mentally challenged.

WORLD MALARIA DAY CELEBRATION

Malaria infection over the years has increased in its number especially in Africa. The high level and rate of increase in malaria infection cannot be ignored or left out for it has become a serious health concern.

Every year it has pertinent to educate people on the malaria, which includes how to check the malaria, early detection and treatment.

In 2021, CLHEI commemorated World Malaria Day through sensitization of residents in Bam-Bam community, Makurdi, Benue State to enlighten 56 households on malaria prevention, early detection and treatment.

INTERNATIONAL FATHER'S DAY CELEBRATION

Father's Day is a day set aside to honor fatherhood and paternal bonds, as well as the influence of fathers in the society. The aim of the celebration or day is to express appreciation and acknowledge the role of the father figure in children lives, and society as a whole. The celebration of this lovely, warm paternal bond is quite popular all over the world. Father's Day was first proposed in 1909, and it is celebrated on 20th June every year. This day is an opportunity to show your father how much he means to you and the role he has played in shaping your life.

CLHEI hosted camp leaders from 3 IDP camps within Benue state to commemorate the International Father's Day and strengthen

their capacity to arrest the issue of child trafficking in the IDPs. This was also to provide them a foundation to understand realities of child trafficking, share knowledge with parents and community members and possibly engage in local prevention efforts.



INTERNATIONAL DAY OF CHARITY/ DISTRIBUTION OF NFIS

The International Day of Charity seeks to promote and recognize charity and its role in easing humanitarian crises and suffering in the world. The day also serves to recognize the work of charitable organizations and individuals around the globe whose philanthropic actions have contributed to the creation of more inclusive and resilient societies. The day of 5th September was chosen to commemorate the passing of Mother Teresa. She was known for her dedication to charitable work and gave her life to helping others and overcoming poverty, suffering and distress.

This year CLHEI celebrated the remarkable day with IDPs in Daudu 1, reaching out to 100 children with clothes.

WORLD HUMANITARIAN DAY

The commemoration efforts were aimed at creating awareness on climate crisis, effects of deforestation and also giving out clothes to the two selected IDP camps in Makurdi local government area of Benue state.

During the sensitization and awareness creation that took place at the two selected camp (Daudu 1 and Abagena IDP camps) the activity was explained in clear terms using the (TIV) language which Majority of the IDPs understood.

The sensitization was carried out in a way that the people will understand and also be part of the activity, a demonstration was shown to them by planting 5trees each in both camps, and explained the importance of tree planting and the harmful impacts of deforestation to the health systems. The people were made to understand that as trees grow, they help stop climate change by removing carbon dioxide from the air, storing carbon in the trees and soil, and releasing oxygen into the atmosphere. They were further instructed on watering and monitoring the planted trees for a healthy growth.

The second aspect of the activity was the distribution of clothes.

Outcomes

- 188 IDPs were enlightened on the dangers of climate crisis and the preventive measures.
- IDPs are made to understand the importance of tree planting, 10 trees were planted, 5 in each IDP camp.
- 133 IDP Women reached with clothes, hair ties, caps, waist trimmer and bras.



WORLD NO ALCOHOL DAY 2021

The impact of the commemoration of World No Alcohol Day cannot be over emphasized. This mind blowing and captivating community participatory event was rolled up with a live radio phone in program which transited to a community engagement town hall meeting anchored by a cross section of moderators and facilitators in the health, legal and security sectors been major actors in regulating and driving risk communication messages relative to alcohol consumption in Benue state North Central Nigeria.

This event exposed the socio-medical harm of alcohol and the linkages of alcohol consumption with Gender Based Violence; created avenues to emphasize the need for social behavioral change in consumption of alcohol in Nigeria. Experience was shared by participants and the need for withdrawal was established among participants both on radio and in the town hall meeting. Nine callers participated on the radio show while fifty (50) participants, 29 male and 21 female were hosted in a participatory community engagement meeting to deliberate on the theme for 2021 (*CHANGE IS NECESSARY*).

Outcomes were harvested on a real time bases and analysis shown that the society will lean positively to change if continuous awareness creation and sensitization are undertaken within and around Benue state.



COMMUNITY LINKS AND HUMAN EMPOWERMENT INITIATIVE

**ACCOUNTS FOR THE YEAR
ENDED 31 DECEMBER 2021**



EWANSON OYARI & CO.
Chartered Accountants

COMMUNITY LINKS AND HUMAN EMPOWERMENT INITIATIVE

ACCOUNTS FOR THE YEAR ENDED

31 DECEMBER 2021

TABLE OF CONTENTS

<u>CONTENTS</u>	<u>PAGE</u>
Corporate Information	1
Statement of trustees' responsibility	2
Trustees' Report	3
Report of the Auditors	5
Statement of Accounting policies	6
Statement of Financial Position	7
Statement of Comprehensive Income	8
Statement of Cash Flows	9
Note on the Accounts	10
Five Year Financial Summary	14

**COMMUNITY LINKS AND HUMAN EMPOWERMENT INITIATIVE
ACCOUNTS FOR THE YEAR ENDED
31 DECEMBER 2021**

CORPORATE INFORMATION

BOARD OF TRUSTEES

Mrs. Helen Teghtegh	Trustee/Executive Director
Dr. Dennis Teghtegh	Trustee/Co-ordinator
Rev. Nicodemus David	Trustee
Demenongu Agev	Trustee
Emmanuel Atini	Trustee
Gwaza L. Ujamaityu	Trustee
Mnena Ikondo	Trustee

BANKERS

First Bank Plc
GTB Plc
UBA Plc
Sterling Bank Plc
Zenith Bank Plc

AUDITORS

Ewanson Oyari & Co
(Chartered Accountants)
72 Ankpa Road
Makurdi
08060659694

**COMMUNITY LINKS AND HUMAN EMPOWERMENT INITIATIVE
STATEMENT OF RESPONSIBILITIES OF TRUSTEES**

In accordance with the provision of sections 334 and 335 of the Companies and Allied Matters Act (CAP C20), LFN 2004, the Board of Trustees is responsible for the preparation of the accounts, which give a true and fair view of the state of the affairs of the Initiative as at the end of the financial year, and complies with the act. The board's responsibilities include ensuring that:


- i. Proper accounting records are maintained.
- ii. The accounts are prepared on going concern basis unless it is inappropriate to assume that the Initiative will continue in its activities in the foreseeable future.
- iii. Adequate internal control procedures are instituted which, as far as is reasonably possible, safeguard the assets, prevent and detect fraud and other irregularities.
- iv. Applicable accounting standards are followed.
- v. Suitable accounting policies are used and consistently applied.

The Trustees accept responsibility for these financial statements which have been prepared using the appropriate accounting policies supported by reasonable and prudent judgements and estimates in conformity with International Financial Reporting Standards and the Companies and Allied Matters Act (CAP C20) LFN, 2004

The Trustees are of the opinion that these financial statements give a true and fair view of the state of the affairs of the Initiative as at the end of the financial year and of its results for that year. They further accept responsibility for the maintenance of the accounting records that may be relied upon in the preparation of financial statements as well as adequate system of internal financial control.

Nothing has come to the notice of the Trustees that indicates that the initiative will not remain a going concern for twelve months from the date of these statements


Trustee


Trustee

COMMUNITY LINKS AND HUMAN EMPOWERMENT INITIATIVE
ACCOUNTS FOR THE YEAR ENDED
31 DECEMBER 2021

TRUSTEES REPORT FOR THE YEAR

The Trustees present their annual report on the state of affairs of Community Links and Human Empowerment Initiative together with the financial statements and auditors' report for the year ended 31 December 2021.

i. LEGAL FORM

Community Links and Human Empowerment Initiative was registered with the Corporate Affairs Commission under the Companies and Allied matters Act 1990 as a Non-Governmental Organization (NGO) in 2010.

ii. PRINCIPAL ACTIVITIES

The principal activities of the Initiative include the following:

- To mitigate against woman/girl child human rights violation.
- To create awareness on human rights and help people discover themselves and their rights through counseling.
- To extend professional hand to all communities in Benue State and link them up to health and human related matters.
- To encourage the less privileged and enhance their social and economic development.
- To empower rural communities towards self-help and development, and link them to opportunities in areas of health and other human developments.
- To provide HIV/AIDS counseling and prevention programmes.

There was no material change in the principal activities during the period under review.

iii. OPERATING RESULTS AND FINANCIAL POSITION AT A GLANCE

The highlight of the operating result and financial position for the period under review are as follows:

	N
Revenue	38,125,162.00
Recurrent Expenditure	54,101,125.00
Surplus/(Deficit) of income over expenditure	(7,774,078).00

Non-current Assets	11,673,617.00
Current Assets	2,992,896.00
Total Assets	14,566,513.00
Current Liabilities	3,285,400.00
Accumulated Fund	11,281,113.00

iv. NON CURRENT ASSETS

Information regarding the Initiative's Properties, Plants and Equipment has been provided in note 1 of these financial statements. In the opinion of the Trustees the market value of the initiative's non-current assets is not less than the value shown in the accounts.

v. STATE OF AFFAIRS

In the opinion of the Trustees the state of affairs of the Initiative is quite satisfactory.

vi. AUDITORS

The auditors, Ewanson Oyari & Co (Chartered Accountants) have indicated their willingness to continue in office.

By order of the Board of Trustees

Secretary



Ewanson Oyari & Co

Chartered Accountants
72 Ankpa Road, Makurdi 08060659694, 08052914307

REPORT OF THE AUDITORS TO THE MEMBERS OF COMMUNITY LINKS AND HUMAN EMPOWERMENT INITIATIVE

We have audited the Financial Statements of Community Links and Human Empowerment Initiative for the year ended 31 December 2021 set out on pages 7-14 which have been prepared in accordance with the Accounting Policies set out on page 6.

Respective Responsibilities of the Board of Trustees and Auditors

The Board of Trustees is responsible for the preparation and fair presentation of the Financial Statements in accordance with the Companies and Allied Matters act CAP C20 LFN 2004, the Financial reporting Council of Nigeria Act No. 6, 2011, and International Reporting Standards, and for such internal controls as the it deems necessary to enable the preparation of financial statements that are free from material mis-statement, whether due to fraud or errors. It is our responsibility to form an independent opinion, based on our audit on these statements and report our opinion to you.

Basis of Opinion

We conducted our Audit in accordance with generally accepted Auditing Standards. An audit includes examination, on a test basis, of evidence relevant to the amounts and disclosures in the Financial Statements. It also includes an assessment of the significant estimates and judgments made by the Trustees in the preparation of the Financial Statements, and of whether the accounting policies are appropriate to the Initiative's circumstances, consistently applied and adequately disclosed.

We planned and performed our audit so as to obtain all the information and explanations which we considered necessary in order to provide us with sufficient evidence to give reasonable assurance that the Financial Statements are free from material mis-statement, whether caused by fraud or other irregularity or error. In forming our opinion, we also evaluated the overall adequacy of the presentation of information in the Financial Statements. The financial statements are in agreement with the books of accounts, which have been properly kept, and we obtained all the information and explanations we required.

Opinion

In our opinion, the Financial Statements present fairly, in all material respect, the financial position of Community Links and Human Empowerment Initiative as at 31 December 2021, and its financial performance and cash flow for the period ended on that date, and complies with the Companies and Allied matters Act CAP C20 LFN 2004, the Financial reporting Council of Nigeria Act No. 6, 2011 and International Financial Reporting Standards (IFRS).

MAKURDI, NIGERIA



CHARTERED ACCOUNTANTS
14 February 2022

COMMUNITY LINKS AND HUMAN EMPOWERMENT INITIATIVE ACCOUNTS FOR THE YEAR ENDED 31 DECEMBER 2021

STATEMENT OF COMPLIANCE AND ACCOUNTING POLICIES

STATEMENT OF COMPLIANCE

These financial statements have been prepared in compliance with the International Financial Reporting Standard (IFRS).

STATEMENT OF ACCOUNTING POLICIES

The following is a summary of the significant accounting policies adopted by the initiative in the preparation of these financial statements

i. Accounting Convention

The financial statements have been prepared under the historical cost convention. No adjustments have been made to reflect the impact on the financial statements of specific price changes in general.

ii. Revenue

Revenue represents the value of grants, donations, gifts and contributions from individuals, donor agencies and other organizations. Revenue is recognized in the financial statement when cash is received.

iii. Depreciation

Property, Plant and Equipment have been depreciated on a straight-line basis at the following rates calculated to write off the cost or valuation of the assets concerned over their estimated useful lives:

	%
Equipment	20
Plant	15
Furniture and Fittings	20
Motor Vehicle	20

No depreciation is provided on fixed assets until they are brought into use.

iv. Inventory

Inventories are valued at the lower of cost and net realizable value

**COMMUNITY LINKS AND HUMAN EMPOWRMENT INITIATIVE
STATEMENT OF FINANCIAL POSITION AS AT 31 DECEMBER 2021**

	<u>Note</u>	2021 N	2020 N
ASSETS			
Non-Current Assets			
Property, Plant and Equipment	1	11,573,617	7,773,862
Current Assets			
Receivables	2	-	100,000
Cash and Cash Equivalents	3	<u>2,992,896</u>	<u>21,057,799</u>
		<u>2,992,896</u>	<u>21,157,799</u>
TOTAL ASSETS		<u>14,566,513</u>	<u>28,931,661</u>
ACCUMULATED FUND AND LIABILITIES			
Accumulated Funds	4	11,281,113	25,706,261
Current Liabilities			
Payables	5	<u>3,285,400</u>	<u>3,225,400</u>
TOTAL ACCUMULATED FUND AND LIABILITIES		<u>14,566,513</u>	<u>28,931,661</u>


.....
TRUSTEE


.....
TRUSTEE

The accounting policies on 6 and the notes pages 10-13 form an integral part of these financial statements

**COMMUNITY LINKS AND HUMAN EMPOWRMENT INITIATIVE
STATEMENT OF COMPREHENSIVE INCOME AND EXPENDITURE
FOR THE YEAR ENDED 31 DECEMBER, 2021**

	<u>Note</u>	2021 N	2020 N
Revenue			
Grants	6	38,125,162	143,843,622
Other Income	7	<u>8,201,885</u>	<u>10,018,760</u>
		46,327,047	153,862,382
Less Expenses			
Programmes and Projects	8	49,265,666	127,303,273
Personnel and Administrative Cost	9	4,831,245	10,278,716
Finance charges		<u>4,214</u>	<u>27,497</u>
		(54,101,125)	(137,609,486)
Surplus/(Deficcit) for the year		<u>(7,774,078)</u>	<u>16,252,896</u>

The accounting policies on 6 and the notes pages 10-13 form an integral part of these financial statements

**COMMUNITY LINKS AND HUMAN EMPOWERMENT INITIATIVE
ACCOUNTS FOR THE YEAR ENDED
31 DECEMBER, 2021**

NOTES ON THE ACCOUNTS

**NOTE
1**

PROPERTY, PLANT AND EQUIPMENTS

	LAND	M/VEH	FURN. N	EQUIPT. N	PLANT N	BUILD W/P	TOTAL N
COST/VALUATION							
At 1 January 2021	7,000,000	350,000	943,150	2,747,900	114,000	-	11,155,050
Addition in the Year	-	-	-	-	-	4,451,400	4,451,400
At 31 January 2021	<u>7,000,000</u>	<u>350,000</u>	<u>943,150</u>	<u>2,747,900</u>	<u>114,000</u>	<u>4,451,400</u>	<u>15,606,450</u>
DEPRECIATION							
At 1 January 2021	-	210,000	758,940	2,330,258	81,990	-	3,381,188
Charge in the Year	-	70,000	148,713	417,542	15,390	-	651,645
At 31 January 2021	-	<u>280,000</u>	<u>907,653</u>	<u>2,747,800</u>	<u>97,380</u>	-	<u>4,032,833</u>
CARRYING AMOUNT							
At 31 December 2021	<u>7,000,000</u>	<u>70,000</u>	<u>35,497</u>	<u>100</u>	<u>16,620</u>	<u>4,451,400</u>	<u>11,573,617</u>
At 31 December 2020	<u>7,000,000</u>	<u>140,000</u>	<u>184,210</u>	<u>417,642</u>	<u>32,010</u>	-	<u>7,773,862</u>

10

**COMMUNITY LINKS AND HUMAN EMPOWRMENT INITIATIVE
STATEMENT OF CASH FLOWS
FOR THE YEAR ENDED 31 DECEMBER, 2021**

	2021 N	2020 N
CASH FLOWS FROM OPERATING ACTIVITIES		
Surplus/(Deficit) for the Year	(7,774,078)	16,252,896
Adjust for non cash items:		
Depreciation	651,645	685,258
Prior year	<u>(6,651,070)</u>	-
OPERATING CASH FLOWS BEFORE CHANGES IN WORKING CAPITAL	(13,773,503)	16,938,154
CHANGES IN WORKING CAPITAL		
(Increase)/Decrease in Receivables	100,000	(100,000)
Increase/(Decrease) in Payables	<u>60,000</u>	<u>685,400</u>
	<u>160,000</u>	<u>585,400</u>
NET CASH FLOWS FROM OPERATING ACTIVITIES	(13,613,503)	<u>17,523,554</u>
CASH FLOWS FROM INVESTING ACTIVITIES		
Purchase of Property, plant and Equipment	<u>(4,451,400)</u>	<u>(2,030,000)</u>
NET CASH FLOWS FROM INVESTING ACTIVITIES	<u>(4,451,400)</u>	<u>(2,030,000)</u>
INCREASE/(DECREASE) IN CASH AND CASH EQUIVALENTS	(18,064,903)	15,493,554
CASH AND CASH EQUIVALENTS AT THE BEGINNING OF THE YEAR	<u>21,057,799</u>	<u>5,564,245</u>
CASH AND CASH EQUIVALENTS AT THE END OF THE YEAR	<u>2,992,896</u>	<u>21,057,799</u>

9

**COMMUNITY LINKS AND HUMAN EMPOWERMENT INITIATIVE
ACCOUNTS FOR THE YEAR ENDED
31 DECEMBER, 2021**

NOTES ON THE ACCOUNTS

NOTE	2021 N	2020 N
2 RECEIVABLES		
Prepaid Rent	—	100,000
3 CASH AND CASH EQUIVALENTS		
Cash	20,919	12,620
FBN 2017036058	24,156	124,298
FBN (TYD) 2029816547	492	426
GTB (CSS)	1,917	1,917
UBA (TYD)	21,678	21,678
UBA 2092512203 -Sustainability Account	13,625	131,425
UBA 2098379004 - Trust Fund Account	2,536,980	5,566,583
Zenith 015412075 - Office Account	21,322	119,140
Sterling 0065800198 - Humanitarian Account	28,949	53,393
UBA 102345385 - APIN Project Account	89,755	1,716,370
UBA 2119078246 - NDI Account	178,075	178,075
Sterling 0068828432 - Appeal Fund Account	792	6,676,893
UBA 1020993291 - NAPAC	2,236	<u>6,454,981</u>
Zenith 2430 - Kitchen Account	<u>52,000</u>	
	<u>2,992,896</u>	<u>21,057,799</u>
4 ACCUMULATED FUNDS		
Balance brought Forward	25,706,261	9,453,365
Surplus/Deficit in the Year	(7,774,078)	16,252,896
Prior Year	<u>(6,651,070)</u>	—
Balance Carried Forward	<u>11,281,113</u>	<u>25,706,261</u>
5 PAYABLES		
Audit Fees	500,000	500,000
Other Payables	<u>2,785,400</u>	<u>2,725,400</u>
	<u>3,285,400</u>	<u>3,225,400</u>

**COMMUNITY LINKS AND HUMAN EMPOWERMENT INITIATIVE
ACCOUNTS FOR THE YEAR ENDED
31 DECEMBER, 2021**

NOTES ON THE ACCOUNTS

NOTE	2021 N	2020 N
6 GRANTS		
ASSAAAH in Nigeria	350,000	—
Start Funds COVID 19 Alert Project	19,466,688	—
TYDF - Humanitarian Project	1,250,000	—
WEP Grant	—	240,000
Christian Aid - NPAC Grant	—	6,639,000
Christian Aid - NALPER Grants	—	99,393,301
Christian Aid - Bank of Ireland	—	4,435,589
Christian Aid - Appeal Fund	—	20,613,285
APIN Grant	<u>17,058,474</u>	<u>12,522,447</u>
	<u>38,125,162</u>	<u>143,843,622</u>
7 OTHER INCOME		
Contributions and Donations	8,166,246	10,013,056
Other Sundry Incomes	<u>35,639</u>	<u>5,704</u>
	<u>8,201,885</u>	<u>10,018,760</u>
8 PROGRAMMES AND PROJECTS		
APIN Project	19,538,553	12,239,358
Other Activities	10,449,154	—
WEP Expense	—	779,781
Start Fund Covid 19 Project	18,026,525	—
TYDF Humanitarian	1,251,434	—
NALPER Project expenses	—	92,938,320
Electric Aid Project Expenses	—	4,292,350
Bank of Ireland project expenses	—	4,435,590
Appeal Fund Activity Expenses	—	<u>12,617,874</u>
	<u>49,265,666</u>	<u>127,303,273</u>

**COMMUNITY LINKS AND HUMAN EMPOWERMENT INITIATIVE
ACCOUNTS FOR THE YEAR ENDED
31 DECEMBER, 2021**

NOTES ON THE ACCOUNTS

NOTE

9

PERSONNEL AND ADMINISTRATIVE COST

	2021	2020
	N	N
Communication	62,600	38,600
Printing and Stationery	34,200	433,190
Transport and Travelling	529,500	328,180
Office Maintenance and General Expenses	521,150	820,600
Fuel and Lubricants	113,650	195,460
Salaries and Staff Allowances	1,125,000	4,645,582
Repairs and Maintenance	162,250	290,700
Rents	380,000	400,000
Water and Electricity	78,400	2,000
Audit Fees	100,000	500,000
Training and Staff Development	—	612,146
Registration, Association Dues and Levies	—	51,000
Donation and Public Relations	—	156,000
Depreciation	651,645	685,258
NHIS Contribution	245,000	160,000
Entertainment	5,300	32,000
Christmas kitchen Expenses	442,000	—
Car Running Expenses	—	20,000
Consultancy	380,000	775,000
Staff Welfare	—	70,000
Medical Expenses	550	63,000
	<u>4,831,245</u>	<u>10,278,716</u>

**COMMUNITY LINKS AND HUMAN EMPOWERMENT INITIATIVE
ACCOUNTS FOR THE YEAR ENDED
31 DECEMBER, 2021**

FIVE-FINANCIAL SUMMARY

	2021	2020	2019	2018	2017
	N	N	N	N	N
Grants	38,125,162	143,843,622	29,927,841	23,039,122	31,215,402
Contribution/Donation	8,201,885	10,018,760	9,573,605	6,797,153	5,197,825
Excess of Income over Expenditure	(7,774,078)	16,252,896	5,074,335	249,006	440,206
Accumulated Funds	<u>11,281,113</u>	<u>25,706,261</u>	<u>9,453,365</u>	<u>4,379,030</u>	<u>4,130,020</u>