



# ANNUAL REPORT 2023

## SUSTAINABLE RECOVERY AND RESILIENCE BUILDING

---

A snapshot of CLHEI 2023 programmes and Donor-funded Projects for vulnerable and Displaced Populations in Benue State.





# TABLE OF CONTENTS

## 1.0 ABOUT THE ORGANIZATION

## 2.0 FOREWORD

## 3.0 CLHEI IN 2023. KEY FIGURES

## 4.0 MAP OF DISPLACEMENTS IN 2023 (REGIONAL SUMMARIES)

## 5.0 FUNDING CLHEI PROGRAMMES

## 6.0 THEMATIC REPORTS

### a) Humanitarian Response and Livelihood

- Economic Empowerment Project
- Community Engagements and Women Empowerment (VSLA)
- Christmas Kitchen

### b) Climate Action

- Capacity building of Local Governments on Climate Risk
- Multi-building Engagements between communities and LGAs
- Multi-Agency Consultative Engagements on Climate Change
- Women empowerment on production of briquettes

### c) Democracy and Governance

- Continuous Voter Registration of Internally Displaced Persons (IDPs)
- Voter Education across IDP Camps & Host Communities
- IDP Voting Framework and Stakeholder Engagement

### d) Health

- Orphans and Vulnerable Children Program

### e) Protection

- Psychosocial Support for victims of Flood

## 7.0 WORKING WITH DEVELOPMENT PARTNERS

## 8.0 SUCCESS STORIES

# ABOUT THE ORGANIZATION

Community Links and Human Empowerment Initiative (CLHEI) is a non-governmental organization that seeks to complement government efforts by reaching out to people in communities and grassroots level, with a vision to create a self-reliant society where individuals and groups explore their inner resources with the aim of realizing their full potentials.

CLHEI was founded in January 2006 and was registered on 18th Oct.2010 with the Corporate Affairs Commission with registration number **CAC/IT/N0 41255**. The organization's **UEI Number** is **MEDAC5AM11F5**. CLHEI has a working relationship Memorandum of Understanding with the Federal Republic of Nigeria under the ministry of Finance, Budget and National Planning with the registration number **MBNP/NGO-IC/1027/1**. CLHEI is an NGO with ECOSOC status, and the Observer Status to the United Nations Framework Convention on Climate Change (UNFCCC).

CLHEI have worked extensively in the North Central and North East of Nigeria. With her presence in all north central states and offices in FCT, Benue, Nasarawa and Adamawa states, CLHEI has worked with vulnerable persons especially the Internally Displaced Persons (IDPs), Children, widows, and the refugees.

## CLHEI VISION

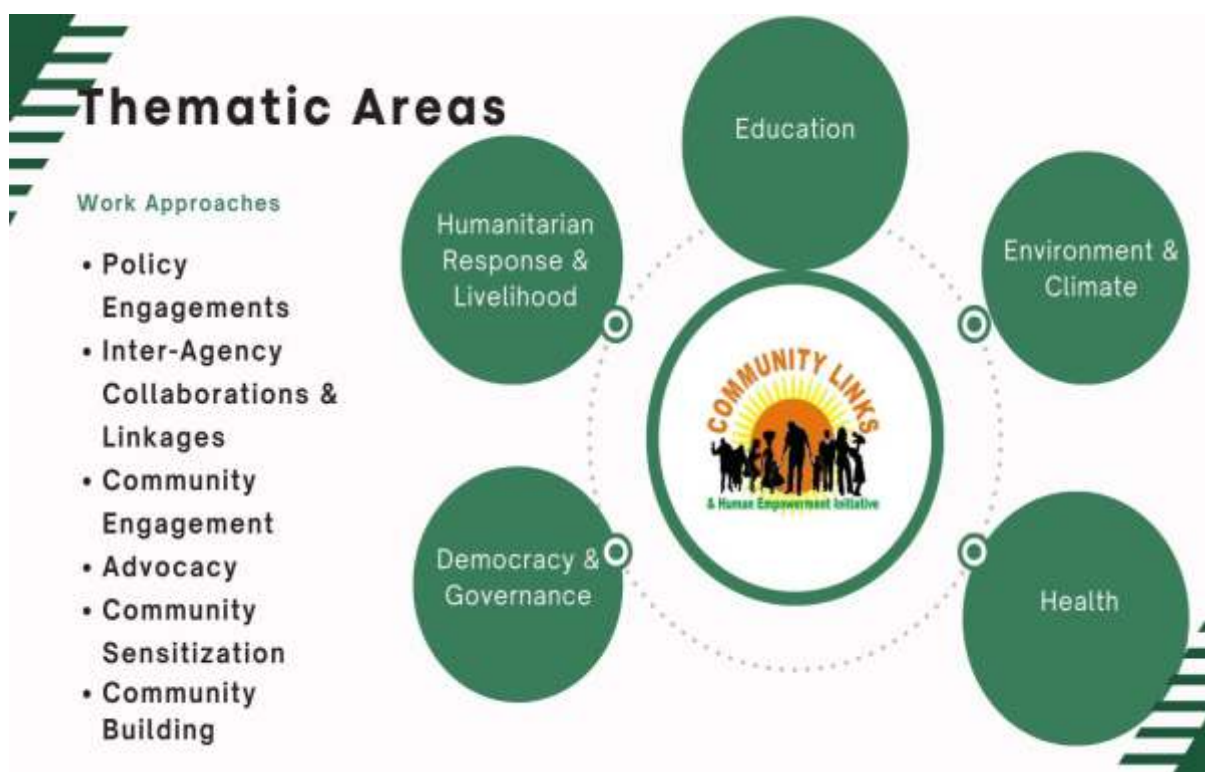
**CLHEI ENVISIONS A SELF-RELIANT SOCIETY WHERE INDIVIDUALS AND GROUPS EXPLORE THEIR INNER RESOURCES AND REALIZING THEIR INNATE POTENTIALS FOR TOTAL WELL-BEING AND A JUST SOCIETY.**



## MISSION STATEMENT

To work with the vulnerable towards advancing, exploring and maximizing their abilities and capabilities for sustainable self- reliance.

## CORE VALUES





# FOREWORD



The headlines chronicle a grim world of conflict, displacement and the struggle to keep up with the rising cost of living. Poverty has increased while trust has receded putting social cohesion at risk.

At Community Links and Human Empowerment Initiative (CLHEI), the organization at the heart of the communities, we work with conflict-affected communities on all these issues and more. Together we are in touch with the severity and we also know that some of their solutions are at hand.

In 2023, CLHEI helped to advance some of these solutions with a record delivery of \$74,503, achieved amid countervailing challenges around the world. This translated into development results in over 22 communities and improvements to the lives of millions of people. Health, protection, livelihood, Climate action, Governance and other services offered over 23,006 thousand people a platform to thrive and create better lives.

This annual report is proof positive that development works. Through meaningful collaborations and partnerships with International partners in the year 2023 like National Democratic Institute for International Affairs (NDI), International Alert, Victims Support Fund (VSF), Action Aid (AA) and APIN, working for sustainable development, we know that prospects must get better given the tools and knowledge gained.

Within CLHEI, the diversity of our team gives us the capacity not just to talk about our vision but to achieve it. Our future-smart portfolio approaches and policy networks amplify collective development intelligence and push the frontiers of development thinking. Notwithstanding the challenges and setbacks we currently face, collectively these choices add up, as illustrated across this report. As policymakers and donors, as business leaders and activists, as people with our world at stake—we can shape a future that works for us all.

**Dr. Helen Teghtegh,**  
Executive Director, CLHEI

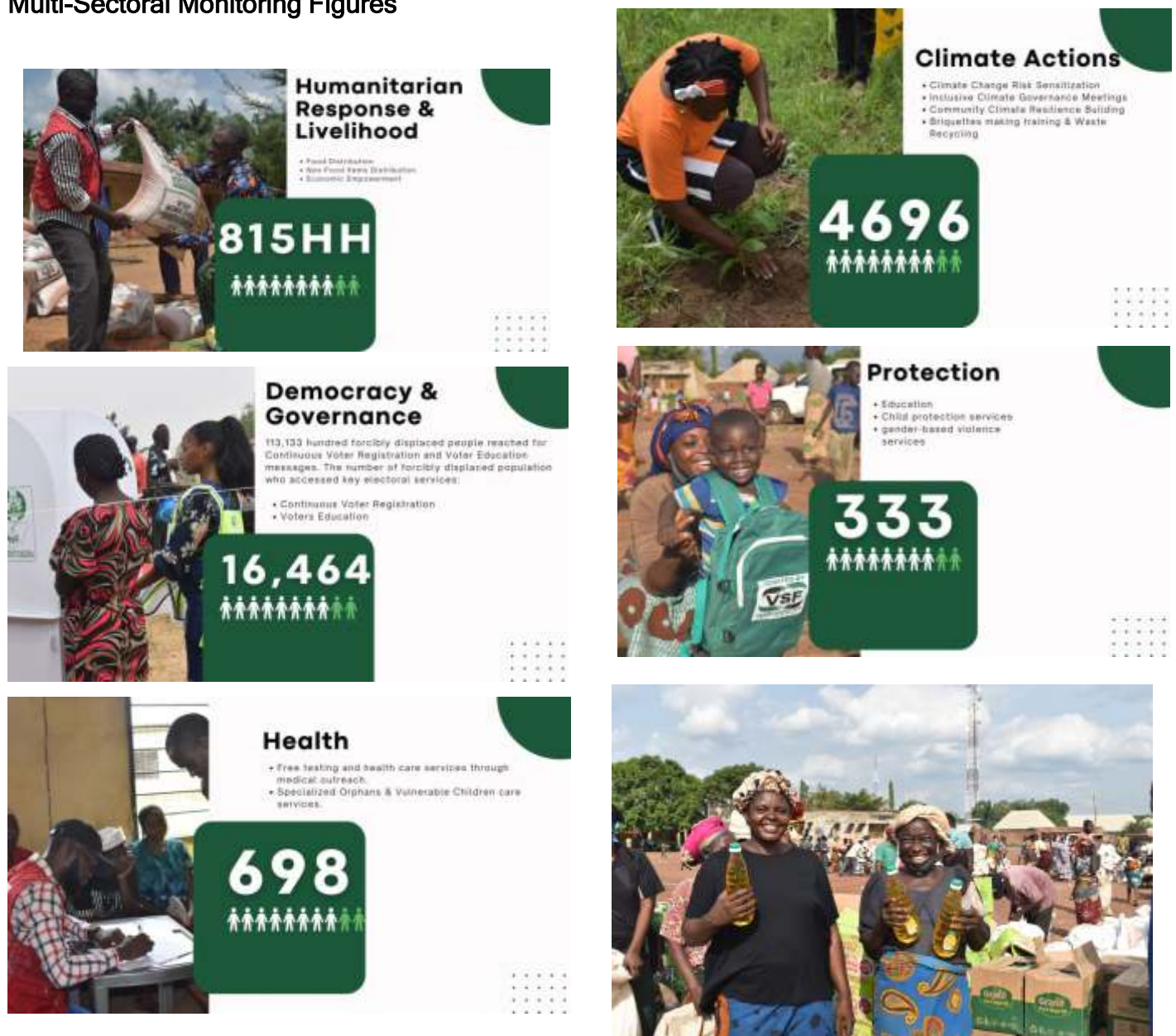
A handwritten signature in blue ink, appearing to read 'H. Teghtegh'.

# 2023 IN REVIEW

## By Expenditure

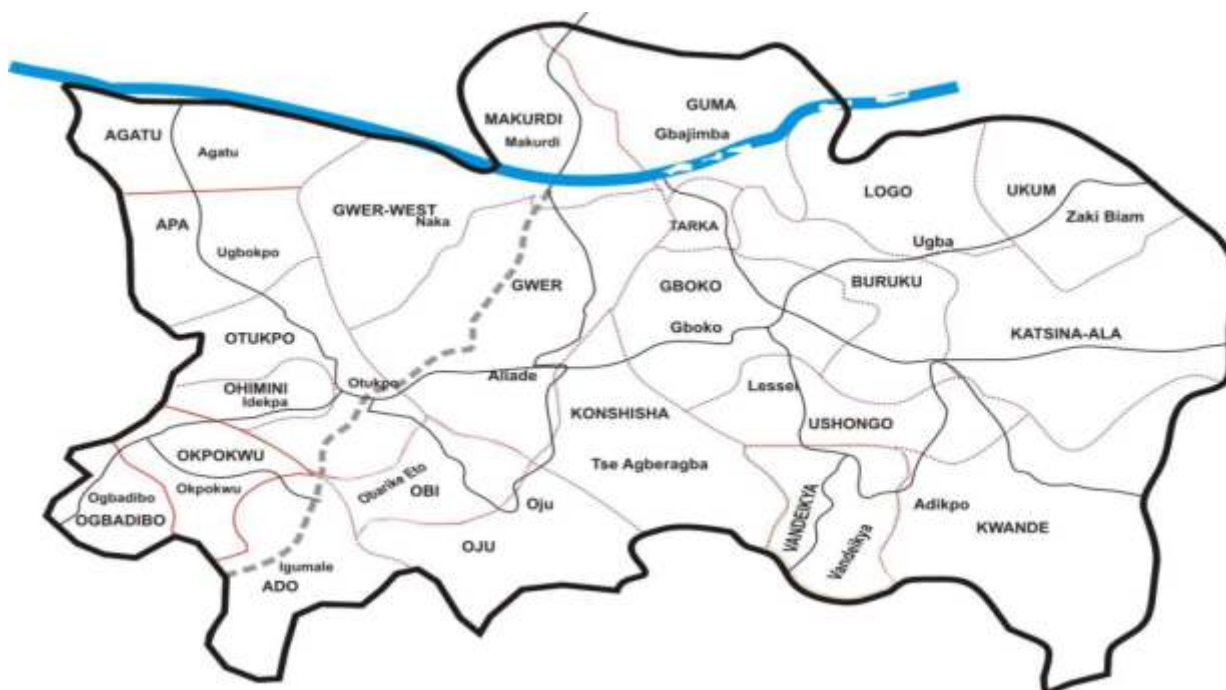


## Multi-Sectoral Monitoring Figures

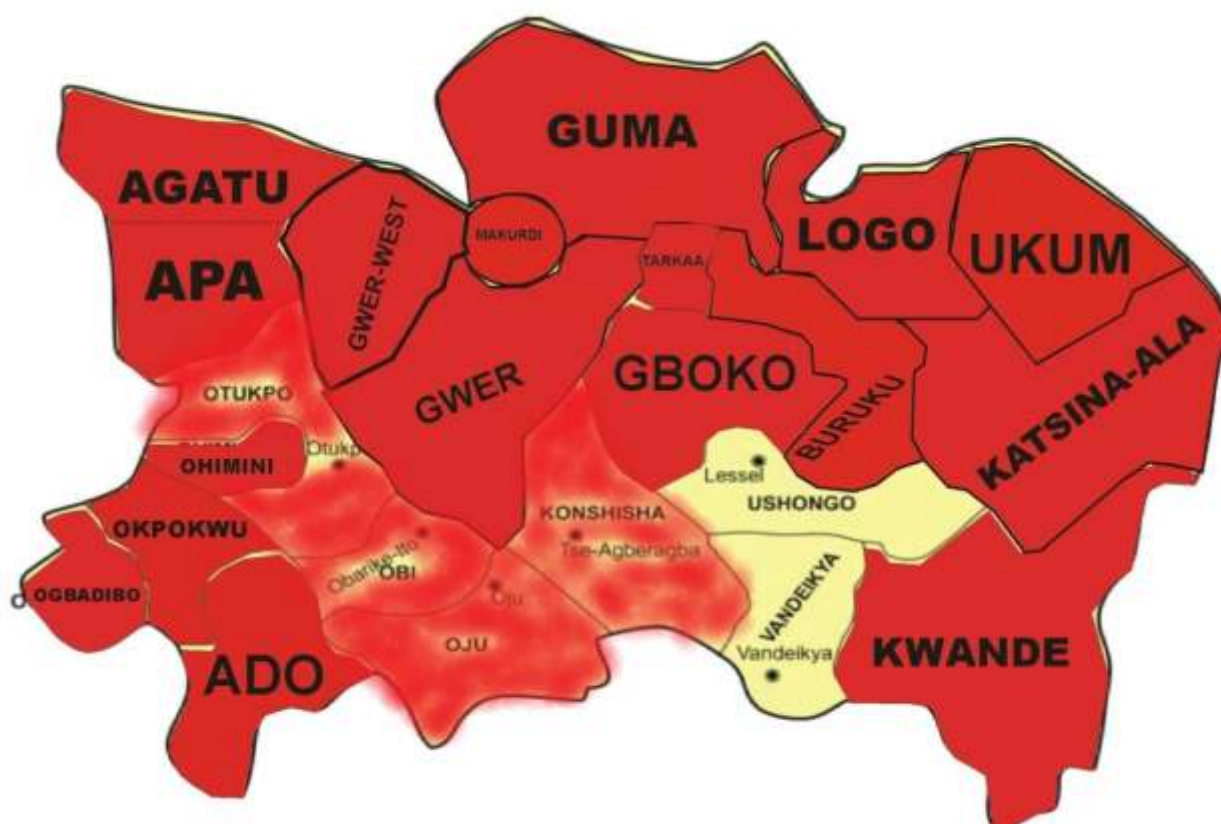




## BENUE STATE MAP



## CONFLICT-AFFECTED AREAS FROM 2011 - 2023



## CLHEI COVERAGE ACROSS CONFLICT-AFFECTED COMMUNITIES



#### MAKURDI

- Abagena IDP Camp
- Baka IDP Camp
- Ichwa IDP Camp
- Nepa Quarters IDP Camp

#### GUMA

- Ortese IDP Camp
- Uikpam IDP Camp
- Daudu 3 IDP Camp

#### KWANDE

- Jato-aka Community
- Ikyogen Community
- Nyihemba Community

#### AGATU

- Obagaji Community
- Ologba Community
- Egba Community

#### GWER-WEST

- Naka IDP Camp
- Agagbe IDP Camp

#### GWER-EAST

- Aliade

#### OJU

- Oju Community
- ukpa AINU-ette Community
- Igilla Community

#### OBI

#### LOGO

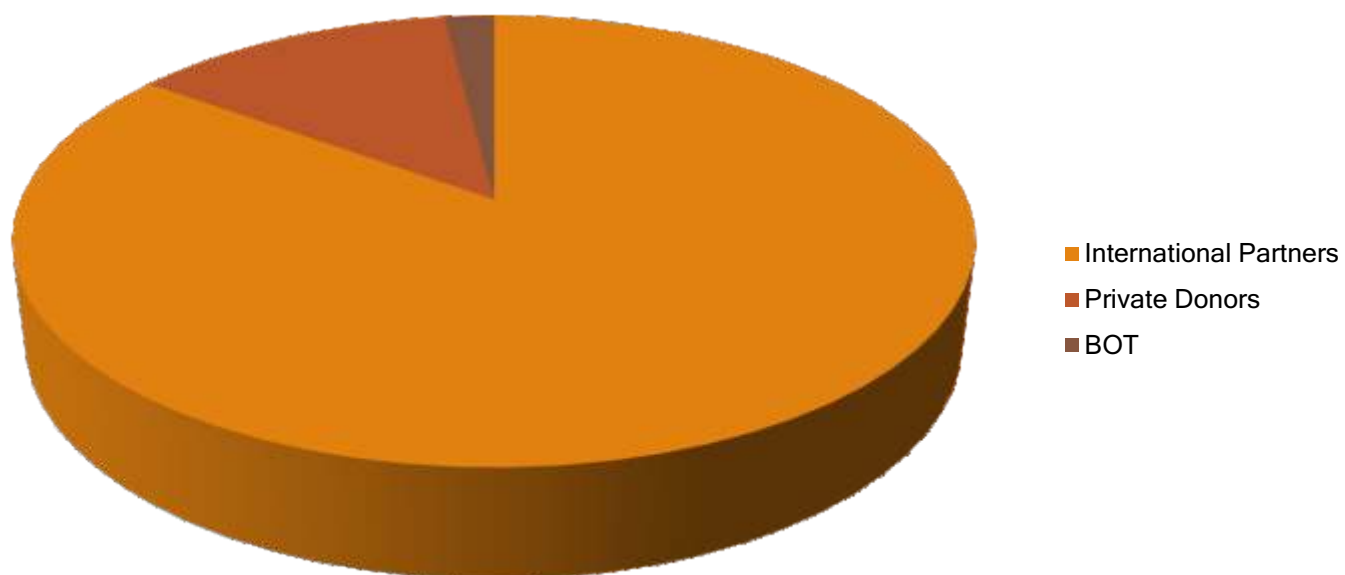
- Anyiin IDP Camp

#### KONSHISHA

# CLHEI FUNDING 2023

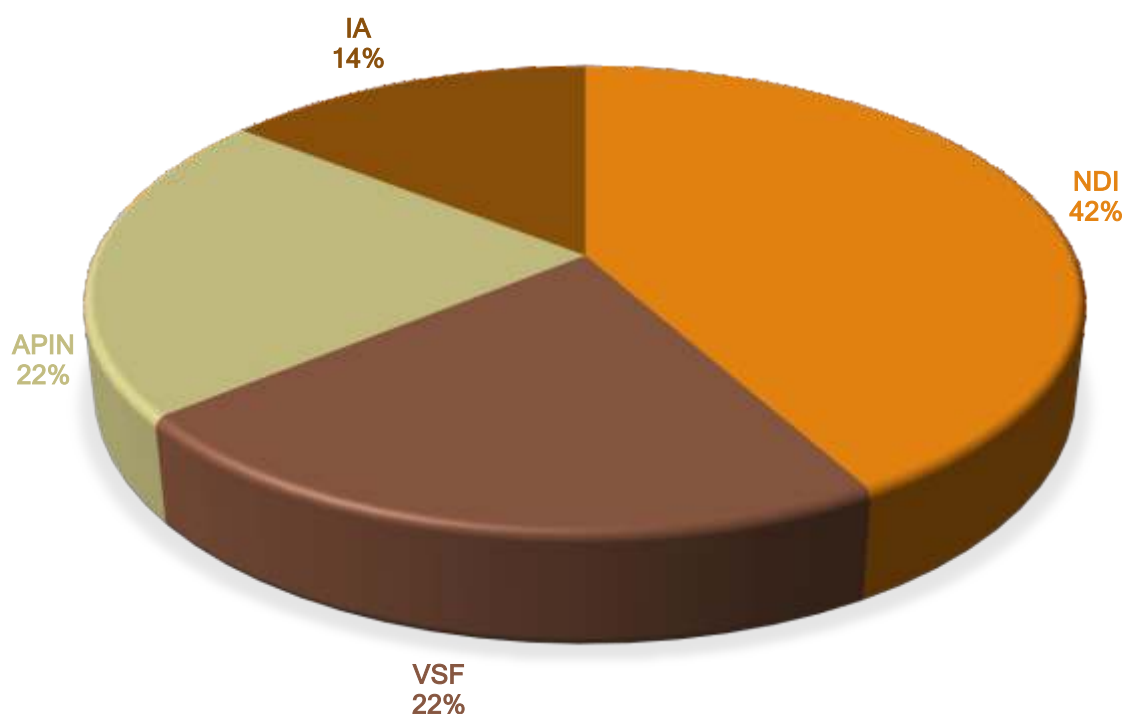
## INCOME SOURCES

Sources of Income|2023



## CONTRIBUTORS

Contributions|2023 Donors



# THEMATIC REPORTS

## AREA ONE: LIVELIHOOD

### DONOR: UNDP, VICTIM SUPPORT FUND

Benue state has continued to be experience conflicts for a long time, recent killings in the state have added to the burden of taking care of IDPs. About 18,000 people have been displaced since the beginning of April 2023 following recent attacks on some communities in the state (ICIR 2023). In their condition of forceful relocation, the IDPs have lost control of their socio-economic life and have become slaves to hunger and poverty in the land.

**Outcome 1: Boosting Local Food Production capacities of conflict-affected communities through Cooperative Farming Model**

In efforts to address the challenges faced by the displaced population in Benue State Nigeria, Community links and Human Empowerment Initiative (CLHEI) with support from Victim Support Fund (VSF) implemented an Economic Empowerment Project (EEP) in Kwande and Oju LGAs of Benue State.

The project aimed at supporting the crisis-affected population in the selected Local Government Areas targeting 300 rice and maize farmers across the two LGAs by providing them with training, farm inputs and Hand Tillers for improved cultivation practices using the cooperative farming model. Additionally, the project included a Women's Economic Support component, offering sewing machines to selected (34) women across the LGAs to enhance their livelihoods and economic sustainability.



**Donor:** Victim Support Fund (VSF)  
**Project Location:** Kwande & Oju LGAs, Benue State  
**Duration:** Three (3) Months

**Intervention:** Distribution of Farm Inputs comprising improved seedlings, herbicides, pesticides, fertilizers and hand tillers to 300 Rice and Maize Farmers across Kwande and Oju LGA,

Cross section of Rice and Maize Farmers who received farm inputs for cultivation following a training on Cooperative Farming Model and Best agronomical practices by CLHEI with the support of the VSF.

## BENEFICIARY SUMMARY

	Clusters	Male	Female	Total
<b>KWANDE LGA</b>	<b>Rice Farmers</b>	52	23	75
	<b>Maize Farmers</b>	12	63	75
	<b>Sewing Machine</b>	0	17	17
<b>OJU LGA</b>	<b>Rice Farmers</b>	61	14	75
	<b>Maize Farmers</b>	57	18	75
	<b>Sewing Machine</b>	0	17	17
<b>Grand Totals</b>		<b>182</b> (54.5%)	<b>152</b> (45.5%)	<b>334</b>



34 Women across Kwande and Oju LGAs empowered with sewing machines for income-generating activities.

### *Cultivation:*

The EEP project provided good seed of high-yielding adapted varieties, Pest control, fertilizers, and other farm inputs making it easy for the cooperatives to cultivate their farms. CLHEI's support to the cooperatives through the agricultural extension workers for sustainable production systems is dynamic: it offered the farmers many possible combinations

of practices to choose from and adapt, according to their local production conditions and constraints.

### *Harvest:*

The harvest across the various communities recorded significant yields. During visits to some of the farm sites, there were minimal reports of farm losses.



### ***Market Linkages/Access:***

On an ongoing basis, CLHEI expedites efforts to connect smallholder farmers more directly to buyers via effective aggregators (typically Small and Medium Enterprises (SMEs)). This approach has helped project beneficiaries' move away from spot selling to itinerant traders. Also,

through this continued support, the farmer cooperatives are building these relationships to stimulate direct contacts with more sophisticated buyers and with the improved knowledge levels of farmer cooperatives through the efficiency of the Agricultural Extension workers attached to them for support, the farmers are able to dialogue and negotiate with traders.



Farm  
growth to  
Harvest



Picture of Rice farm site in Jato-aka area of Benue State during monitoring visit by CLHEI project team to the area.





CLHEI is supporting with technical capacity 68 Village Savings & Loans Association (VSLA) with over 1,675 members across 15 communities in 6 LGAs of Benue State, Nigeria.

**Outcome 2: Enhancing income generating activities and social cohesion through Village Savings and Loans Model for conflict-affected communities.**

Support for Social Stability and Security of Conflict affected communities in North East and Middle Belt, Nigeria is a United Nation Development Programme (UNDP) intervention in Benue state. UNDP through CLHEI emplaced and strengthened mechanisms for enhancing social cohesion, community security and in turn contributed to the reduction of incidents of sexual and gender based violence against targeted communities.

CLHEI supported Village Savings and Loan Associations (VSLAs) by delivering training for Capacity Development, offering Technical Support and disbursed Matching grants to each association's revolving funds across the 4LGAs of implementation (Agatu, Buruku, Guma, Kwande) in Benue State, Nigeria.

The activities were successfully implemented in the context of this project. CLHEI established 60 VSLA groups, with a total of 1,131 members, out of which 80% Milestone Report (910) are female members who were able to save a

combined sum of 1,429,240.00 naira after 4 meetings in 1 month.

Through the operational success of the VSLA Model in the communities, they have been several replications across other communities, giving birth to over 8 new VSLAs cut across Makurdi, Buruku, Kwande, Guma and Agatu LGAs. CLHEI currently is supporting with technical capacity a total of 68 Village Savings and Loans Association with over 1,675 members across 15 communities in 6 Local Government Areas of Benue State.

CLHEI seeks social cohesion rebuilt and community security reestablished,



culminating to contribute to efforts to strengthen the resilience of targeted communities and its affected populations, especially women, girls and the elderly against future vulnerabilities.

During the course of implementation, a key lesson learnt was that even though community members have capacity to save, they were not saving owing to the fact that there were non-flexible saving structures. The VSLA model showed this difference from other saving models that they have experienced, in that it allows them to pool funds & save in the lowest amounts possible; use the funds to boost

or startup businesses, and engender social cohesion through the meetings.



Pictures  
from  
VSLA  
Meetings



# THEMATIC REPORT

AREA TWO: CLIMATE ACTION  
DONOR: INTERNATIONAL ALERT



Multi-agency Consultative Meeting toward Improved understanding of communities, local Government and state authorities on Climate Change Risks, mitigation and adaptation strategies for climate-affected communities of Benue State.

Community Driven Development (CDD) ensures that communities are sufficiently empowered to effectively take charge of their own development priorities. In order to attain the philosophy of the CDD concept, communities acquire new skills, improve old ones and follow a systematic procedure for project ownership through identification, prioritization, design, implementation, maintenance and sustainability.

In the light of the foregoing, CLHEI in a consortium with funding from International Alert supported the development of a Local Peace and Adaptation Plan (LPAP) for Fiidi community in Makurdi, and the Ologba & Egba communities of Agatu to assist and guide the targeted communities in implementing their prioritised needs in a peaceful climate change adaptive way of carrying out their socioeconomic and livelihood activities for their shared prosperity.

## **Outcome 3: Inclusive Climate Governance through Capacity Building of Communities and Local Government Officials on Climate Change Risk and Adaptation.**

The Capacity Building training brought together Local Government Officials of decision making capacity and Community members of selected conflict-affected communities under the “Powering Peace through Climate Action” Project to share

knowledge and highlight the adverse Climate Change gaps/impacts and community based coping strategies and adaptation options.

The training aimed at enhancing capacity of different stakeholders to understand



Climate Change better and explained several frameworks, tools and techniques to facilitate planning and designing of community-based adaptation projects. Also, the Meeting served as a platform to build synergy between development partners, Government and CSOs and supports our overall objective to mobilize climate adaption as a neutral entry point to bring divided and marginalized communities together and local governments to make climate action more inclusive and conflict sensitive in Benue State.

With the support of International Alert, CLHEI, Community Development Consultants, and members of the consortium, Angel Support Foundation and Kende Avese Foundation facilitated discussions with the community members

to identify the issues that are a threat to their livelihood, prioritize their needs as a community, and have a common understanding of priority actions. These discussions have provided the foundation for the development of the Local Peace and Adaptation Plan for Ologba & Egba communities of Agatu LGA and Fiidi council ward, Makurdi LGA.

The LPAP document captures an overview of the profile of the communities including historical profile; socio-economic profile; available natural resources; available infrastructure/social services; existing institutions; economic groups; livelihood pattern; social inclusiveness/gender balance; peace and climate change problems; and needs prioritization.



Strengthened capacity of **50 Local Government Officials** and community leaders on Climate Risks and Adaptation Measures to foster inclusive Climate Governance.



Cross-section of participants during the training on Climate Change for Makurdi local Government Officials in Benue State

#### Outcome 4: Improved Capacity of community women on fabrication of briquettes and waste to wealth concepts.



Improved Capacity of **100 community women** on briquettes making using rice husk and waste in Makurdi and Agatu LGAs of Benue State.

Charcoal burning is the main source of livelihoods to many communities in Benue State, Nigeria, as a result of low



awareness on its negative impacts on the ecosystem and environment as a whole.

The cutting down of trees in several communities of Benue State has been rampant in recent years due to reasons such as human settlement and its use as a source of energy. A majority of people use wood as a source of energy, which results in global warming, destruction of habitats and water catchment areas; which forces women to travel for long distances in search of water.

In the pursuit of environmental conservation, CLHEI advocates for sustainable environmental management practices. In a bid to conserve the environment, CLHEI carried out

awareness and sensitization campaigns on Climate risks and further trained women who have shown interest in making and using briquettes as a clean source of energy. This will not only reduce the accumulation of greenhouse gases, it will also transform their livelihoods through the enterprise. Through this enterprise, women can start making eco-briquettes to supplement their income.

This is benefiting communities greatly in that using eco-briquettes over the regular charcoal is reducing dependency on trees as a source of fuel thus protecting the environment. These briquettes burn three times longer than regular charcoal and emit less harmful gases which can cause respiratory diseases.

### **Outcome 5: Capacity building of 100 Internally Displaced Households on Climate-Smart Agriculture and sustainable Agricultural techniques.**

Community Links & Human Empowerment Initiative (CLHEI) as part of her mandate envisions the possibilities of strengthening the local food production capacities of communities and food sufficiency for Vulnerable and displaced populations using Climate-Smart Agriculture techniques as a veritable strategy.

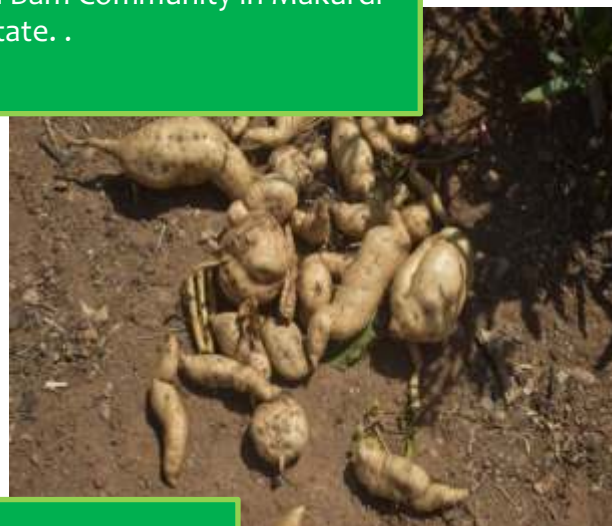
In Benue, the farmer-herder conflicts have displaced thousands of farmers from their natural habitats and have put them in Internally Displaced Persons Camps, giving rise to severe hunger and starvation among vulnerable and displaced populations. The situation continues to deteriorate in terms of livelihood household options, and the prevailing insecurities make it difficult for farmers to access their farmlands in order to cultivate crops. The flow-on effects include a substantial reduction in food security. As a result, innovations are required to address food insecurity and poverty. Climate Smart Agriculture plays significant role as exemplified by green rooftop farming, backyard gardens, community gardens and commercial farms.

CLHEI Climate Smart Agriculture strategy focuses on approaches that guide actions to transform agri-food systems towards green and climate resilient practices. This is aimed at enabling sustainable-increasing agricultural productivity and incomes; adapting and building resilience to climate change; and reducing greenhouse gas emissions, where possible.

CLHEI trained 100 households on cultivation in Sack farming technique in NEPA Quarters IDP Camp and Kighir communities in Makurdi, Benue State. The training exposed the IDP households to yam, potato and vegetables farming techniques and how to use low-cost local methods to chase away pests and other harmful organisms from plants to increase yields. With the application of the knowledge gained, IDPs and vulnerable populations can grow crops around the camp vicinity, roof tops or in their backyards. Sack farming is a type of vertical farming concept that can be applied for food sufficiency for IDPs and in other agrarian rural communities in Benue State.



Improved capacity of **100 Internally Displaced Households** on Climate-Smart Agriculture and sustainable Agricultural techniques at NEPA Quarters IDP Camp and Bam Bam Community in Makurdi LGA, Benue State. .



Produce from One bag of Sweet-potato





## OUTCOME AREA 7: WOMEN AND GIRLS DEMANDS AT THE COP28

### DONOR: WOMEN ENVIRONMENTAL PROGRAM (WEP)



**CLHEI Executive Director during a presentation at COP28 in Dubai.**

The UN COP28 summit took place in Dubai, and represented by the Executive Director, Dr. Helen Teghtegh, Community Links and Human Empowerment Initiative participated actively as the platform offered the opportunity to share ideas, lessons and collaborative effort toward “Delivering Climate Justice for Vulnerable Populations and Regions, with hundreds of conversations taking place around climate solutions in response to climate change, food, and energy, health and debt crises.

During the summit, CLHEI participated in several discussions and side events including:

- Gender and Environment Data Alliance: Roots of Change put together by Women Environmental

- Programme (WEP), Environment and Development Organization (WEDO) and Asian Pacific Resource and Research Centre for Women (ARROW).

Building Alliances to deliver Climate Justice for the vulnerable put together by Women Environmental Program, WECF International, UNU and Christian Aid.

The cross-cutting themes emphasized the need for data which is at the nexus of gender, environment and climate. Our demands centered on strengthening policies in order to chart a responsive and coherent approach to deliver solutions to climate change taking into account and involving the most affected and under-resourced in the name of climate justice. CLHEI calls for the mobilization, curation, communication, application and learning to inform gender-responsive policy and programming.

# THEMATIC REPORT

AREA THREE: DEMOCRACY & GOVERNANCE

DONOR: NATIONAL DEMOCRATIC INSTITUTE (NDI)

## Outcome area 8: Increased Participation of Internally Displaced Persons in the Electoral Processes in Benue State.

During the 2019 general elections, many internally displaced persons (IDPs) in Benue State did not vote due to the inadequate implementation of the Independent National Electoral Commission (INEC) framework and regulations for voting by internally displaced persons 2019. In ensuring that internally displaced persons (IDPs) in Benue State participate in the 2023 general elections, Community Links and Human Empowerment Initiative (CLHEI) through Advocacy, key stakeholders engagement, sensitization and mobilization for the CVR Pre-registration exercise, increased the participation of IDPs in the 2023 general elections that held in Benue State.

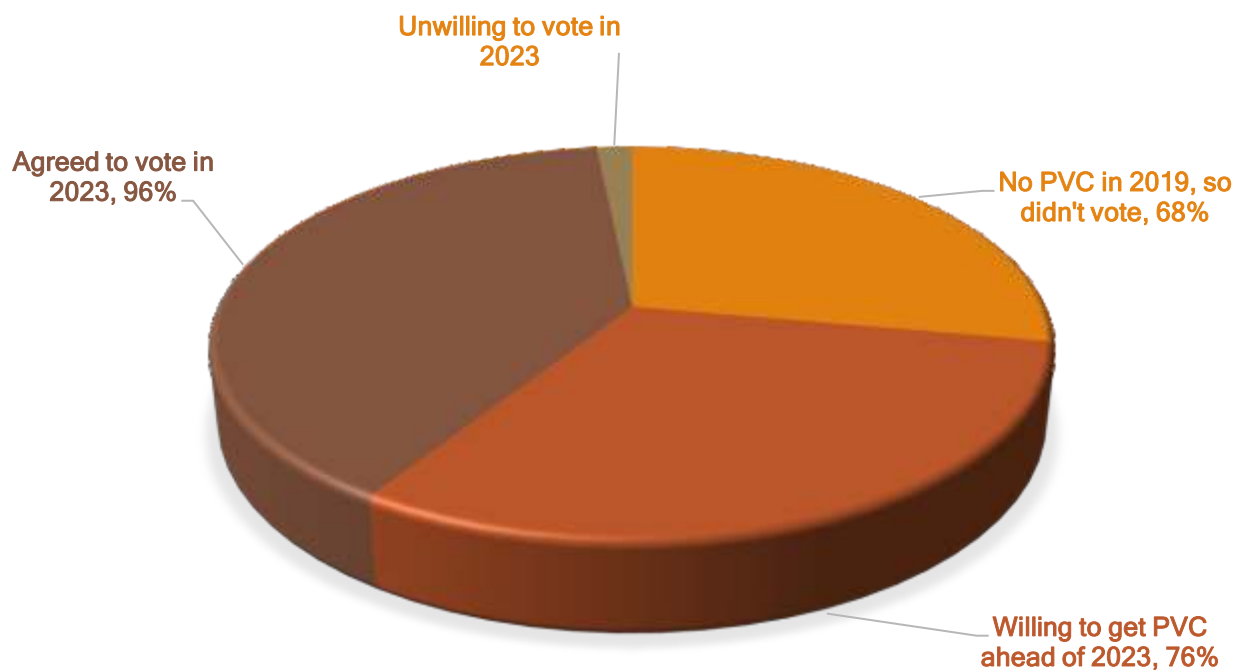


Continuous Voter Registration: CLHEI registered 1064 IDPs directly to get their Permanent Voters Card (PVC)

Findings from CLHEI baseline conducted in 2023, revealed that a sample size of 1236 respondents were assessed across 3 IDP Camps (Ortese, Uikpam, Daudu 3) and 5 host communities [Makurdi (Nepa Quarters, Federal Housing, 72 Barracks), Kwande (Jato-aka) and Agatu (Obagaji)] of Benue State.



## IDP ELECTORAL PREPAREDNESS AHEAD OF 2023 GENERAL ELECTIONS



**Group photograph with some IDP women displaying their PVCs following the CVR registration efforts by CLHEI at the Ichwa IDP Camp Makurdi, Benue State.**

GOTV Project Implementation Outcomes:

## GOTV IMPLEMENTATION OUTCOMES

### ▪ Voter Turn Out

12.1% increase in IDP voter turn-out  
2019 general elections – 44.3%  
2023 general elections – 56.4%

### ▪ Voter Registration

Facilitated the registration and collection of Permanent Voters Cards for 1064 IDPs.

### ▪ Policy Influencing

4 out of 7 recommendations adopted by INEC Nigeria toward review of the 2019 INEC IDP Voting Framework.

### Voting Centres

Situation of 59 voting points within IDP Camps and within 20 minutes walking distances around the communities.

### Voter Education

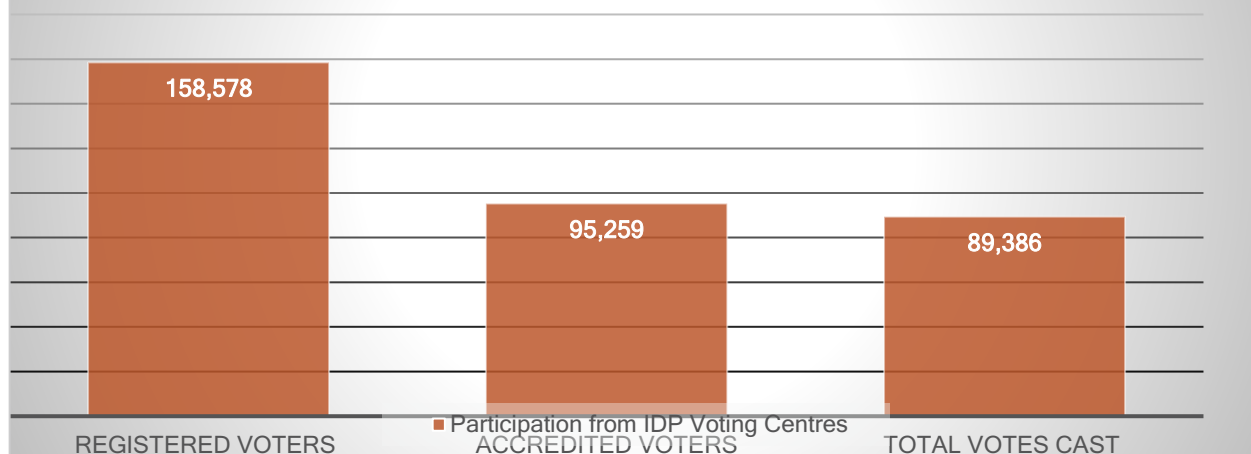
Reached 6400 IDPs with Voter Education messages through the use of Theatre-for-Development (TFD).



***Head of ICT INEC Benue, Tol Wakili sensitizing IDPs on the use of the voting materials for the 2023 general elections in Ortese IDP Camp Guma LGA, Benue State.***



## Participation from IDP Voting Centres



The voter turnout of IDP voters stood at **56.4%**.

### **POLICY RECOMMENDATIONS ADOPTED BY INEC NIGERIA**

1. The views of IDPs should be considered when updating the IDP Voting framework and during different phases of implementation. **(Adopted)**
2. The IDP Framework should include language that designates all IDP camps and host communities as mandatory CVR centers. These centers should serve as distribution points for PVC collection. **(Partially adopted)**
3. The IDP Framework should be reviewed to create mandatory polling units in IDP camps and host communities. Based on the reality that IDP camps can be closed when peace returns, the language in the framework should designate the polling units cited there as temporary polling units. These temporary polling units can be open or closed following a multi-stakeholder engagement in the presence of IDPs at these polling units. **(Adopted)**
4. The IDP Framework should include specifics on how INEC, security agencies and other partners in the inter-agency consultative committee on election security (ICCES) will provide security for IDPs during CVR and on Election Day. **(Partially adopted)**
5. The IDP framework should recommend the creation of IDP Desk Officers to address the election-related concerns of IDPs as already with other marginalized groups like women, youth and persons with disabilities (PWDs).
6. The framework should be amended to give inter-state IDPs the right to vote in all elections like their intra-state counterparts. It is only fair that inter-state IDPs that have lived in a particular location for prolonged periods are allowed to vote. The Electoral Act allows all citizens to transfer their registration and vote in other jurisdictions within short notice, and this should be no different for IDPs.
7. The INEC framework for IDPs should be reviewed to include a specific time and frequency of surveys to be conducted in IDP Camps and host communities to collect data on the location, condition of IDP camps and registration status of IDPs. INEC should collaborate with relevant institutions like National Emergency Management Agency (NEMA), National Commission for Refugees, Migrants and Internally Displaced Persons (IDPs), State Emergency Management Agency (SEMA), National Population Commission and Humanitarian Agencies.

# THEMATIC REPORT

## AREA FOUR: PROTECTION DONOR: ACTION AID

Millions of people around the world suffer unthinkable distress due to armed conflict, natural disasters and other humanitarian emergencies. They may be forced to flee their homes, some persons separated from their families along the way. During conflict, they may endure staggering violence, severe injuries and the threat of recruitment into armed groups. Many are cut off from fundamental services like clean water, health care and education, especially as towns become militarized and communities divided.

Through it all, such persons often lack access to mental health and psychosocial support, with potentially devastating long-term effects. Anxiety, depression and other stress-related problems threaten their ability to live normal lives and be happy. Violence or the effect of natural disasters can take a lifelong toll on their emotional health, physical health and social development. For children for instance, if exposed in early childhood, the experience can even hamper their brain development. For adolescents, severe distress and exposure to traumatic events can lead to various harmful outcomes, including alcohol and drug abuse, low self-esteem, health issues, poor school performance, self-harm and suicide.

Crisis and disaster situations also put parents and caregivers under mental and psychosocial duress, which can prevent them from providing the protection, stability and nurturing care their children need during and after an emergency.

### **Outcome area 9: Awareness Creation to mitigate the rising increase of trafficking in Benue State.**

Human trafficking and migrant smuggling are complex realities in Nigeria. As a country of transit and destination, it has become imperative to address the expansion of criminal networks, both domestically and internationally. Many migrants from Sub-Saharan Africa, notably from Niger and Cameroon, enter Nigeria through the Nigeria-Niger border, then others move out through the region of Agadez via Niger to reach Algeria or Libya. During the often-perilous journey, migrants are vulnerable to being exploited by criminal networks and government authorities have made the fight against these crimes a priority. However, while they may be no restrictions to migration, many communities and parents have let their children fall into the hands of traffickers in search of greener pastures largely as a result of low awareness raising and training of community security structures to better understand how to combat these crimes.

It is in this context, that CLHEI under the Civil Society Network on Migration and Development - Benue jointly organized awareness and sensitization activities for transport associations, travel companies, youth and women's associations and community leaders.

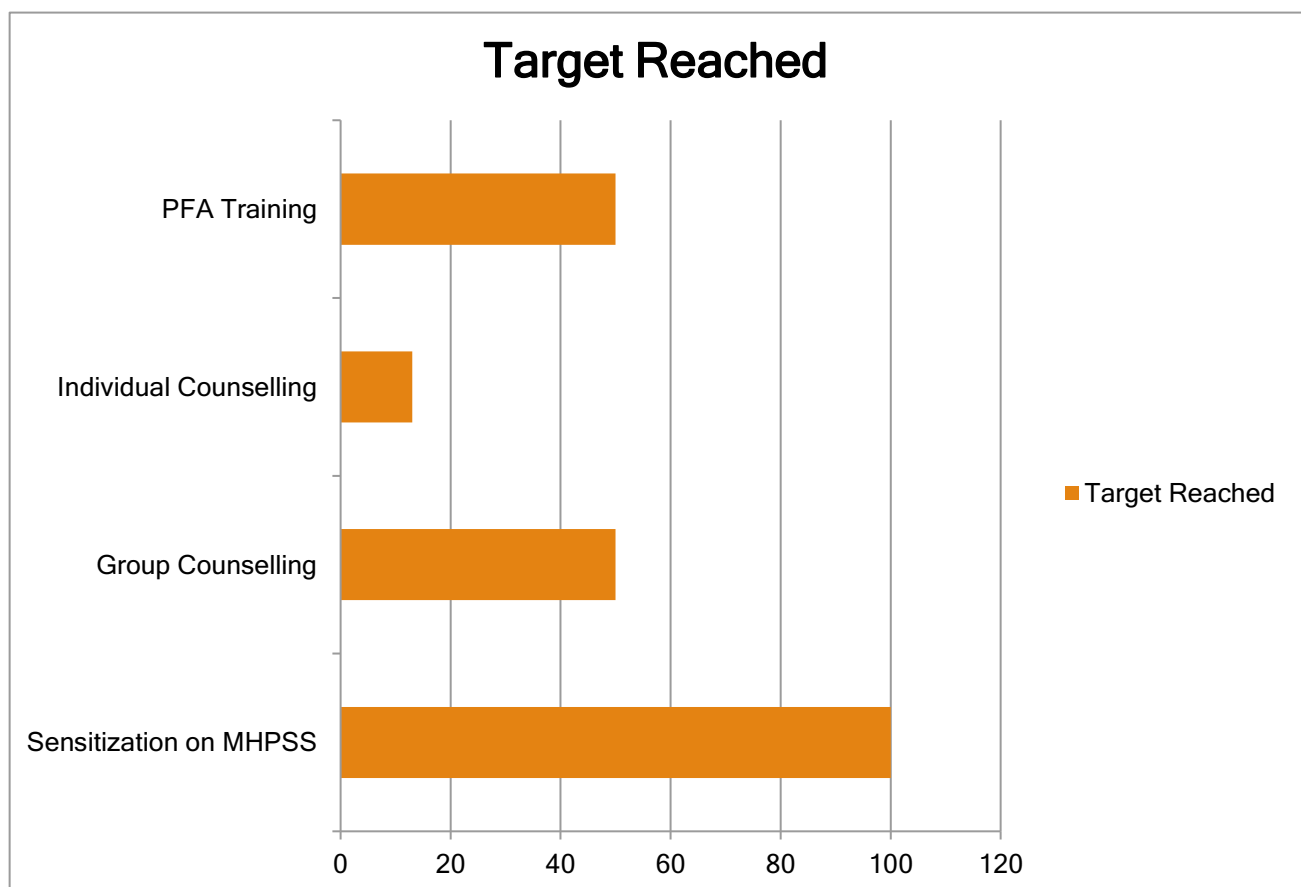
The initiatives builds on the fight to stem the ugly menace of trafficking and assists the Benue State Government in targeted, innovative and demand-driven interventions: sustaining effective strategy and policy development and strengthening the coordination of criminal justice response.

## Outcome area 10: Psycho-social Support for victims of flood-affected Communities.

CLHEI in collaboration with First Step Action and support from Action Aid worked alongside community leaders in Agatu Local Government Area of Benue State to develop their capacity to support child and family well-being. Through activities like counseling to foster stigma-reduction and sessions that facilitate mental health care.

To address the mental health and psychosocial well-being of women, children and adolescents, there was the need for a holistic and tiered approach to MHPSS that includes actions to: promote well-being; prevent poor mental health by addressing risks and enhancing protective factors; and ensure quality and accessible care for those with mental health conditions. Our Community-based approaches to Mental Health and

Psychosocial Support (CB MHPSS) in emergencies are based on the understanding that communities can be drivers for their own care and change and should be meaningfully involved in all stages of MHPSS responses. Emergency-affected people are first and foremost to be viewed as active participants in improving individual and collective well-being, rather than as passive recipients of services that are designed for them by others.







*Mental Health training with community leaders in Agatu Local Government Area, Benue State.*



*Mental Health sensitization with IDPs in the Baka IDP Camp Makurdi, Benue State.*

# THEMATIC REPORT

## AREA FIVE: HEALTH

DONOR: APIN

### OVC PROGRAM CONTRIBUTION TO 1<sup>st</sup> 95 - CASE FINDING

The APIN-CLHEI OVC program contributed to the achievement of 1<sup>st</sup> 95 by:

- Enhancing case finding through HIV testing services (HTS). 356(M: 174, F: 182) negative children were risk assessed and referred for test to know their HIV status.
- HIV Exposed Infants (HEI) 45(M:20, F:25) were also being

followed up to go for DBS test to know their final outcomes which determines if they are positive or negative..

- HIV Prevention key Messages, SRH messages were provided to 1595 (M: 809, F: 786) during Community Adolescent club meetings and home visit.

### OVC PROGRAM CONTRIBUTION TO 2<sup>nd</sup> 95 - CASE RETENTION

- CLHEI provided health education to OVC and their families. 167(M: 73, F: 94) HIV positive Adolescents were linked to OTZ Club meetings across five facilities.
- 30(M:13,F:17) adolescent were supported with transport to attend adolescent club meeting where they are reinforced on adherence to medication, positive leaving and adequate nutrition,

- 85 (M:11 F:74) caregivers attended better parenting sessions where their parenting skills were improved and adherence counselling was given
- 110(M: 51, F: 59) participants who had clinical appointment were reminded via phone call and home visit, 457(M: 223, F: 234) CLHIV/ALHIV were supported with escort services (transport) to access these services.

### OVC PROGRAM CONTRIBUTION TO 3<sup>rd</sup> 95 - CASE SUPPRESSION

- 33(M: 18, F: 15) VC with unsuppressed viral load have been linked to Enhanced Adherence Counselling (EAC) to ensure suppression. CLHEI found out the root causes of their un-suppression and those who did not have access to nutritious food were provided with food supplements and others with transport support to access care. 7(F) benefited from condition Cash Transfer and Home Stead Gardening inputs were also given to 30 (M: 7 F: 23) caregivers of unsuppressed CLHIV to address

challenges of their non-suppression. 16(M: 7 F: 23) were trained on vocational skills and provided with start-up kits.

- CLHEI leverage on OTZ Meetings and Adolescent support group meeting and bled 320(M=150, F=170) Adolescent Living with HIV (ALHIV) also mobilize 53 (M: 20, F: 33) for viral load bleeding during Adolescent boys and girls club meetings and Home visit. Households were also provided with knowledge and skills on good nutritional intake as key in



achieving viral suppression during food demonstration

- Caregivers were also provided with tips on infants and young child feeding (IYCF).

## STRATEGIC PARTNERSHIP WITH STAKEHOLDERS AND OTHER PROGRAM AREAS

- OTZ platforms: CLHEI monitored OTZ club meetings across 5 facilities with a total of 167(M: 73, F: 94) adolescents. CLHEI also leveraged on OTZ Platforms for viral bleeding, drug refill, enrolment into OVC, and adolescent VSLA
- National Population Commission (NPC): CLHEI partnered with NPC and provided 1622(M: 772, F: 850) birth certificates to her Vulnerable Children
- Local Government social Welfare: CLHEI partnered with the LG social welfare office for representation of the LGA and monitoring of HES activities
- Support groups: CLHEI is implemented three support group meetings, two for adults at NKST CHC Gbe and CHC Waapera and one for adolescents at General Hospital Lessel. This is done to enhance treatment literacy and retention into treatment
- Health facilities: CLHEI is partnering with 15 APIN supported facilities in the LGA to ensure comprehensive treatment outcomes for her participants.

## ACHIEVEMENTS FROM HOUSEHOLD ECONOMIC STRENGTHENING (HES)

- 8 New VSLA Cohorts with 192 (M:71, F:121) membership
- Homestead gardening support: 30 (M:8, F:22)
- Enrolled into vocational skills and apprenticeship program 16(M:5, F:11)
- Start-up kits provision 10(M:2, F:8)
- 2 Communal Farms setup and cultivated
- 2 Community food bank established
- Conditional Cash Transfer 10(F)
- Food support (15Households)





# CLHEI FUNDED YEARLY PROGRAM

## CHRISTMAS KITCHEN 2023

At CLHEI, Christmas Kitchen is one of our many ways of reaching out to vulnerable groups and indigent persons in different locations where we share food and non-food items with identified persons. Since the inception of the organization this has been a yearly practice to share together in the spirit of Christmas; a humanitarian response for over 16years running now.



**Loading of 2023 Christmas Kitchen Items in preparation for distribution within IDP Camps by CLHEI Staff.**

As part of the activities to mark the 2023 Christmas Kitchen Project, CLHEI distributed 300 5kg bags of Rice, Maggi, Tomato paste, Salt and clothes to 300 Households drawn from Benue state (Baka, Nepa Quarters IDP Camps, NUJ & Bam-Bam communities) and Nasarawa State (Tudun Kaure).

The 2024 Christmas Kitchen will target 1000 vulnerable households, and is open to collaboration and partnerships. Contributions can be made in favor of CLHEI Humanitarian Project into:

**Account Number:** 1217552430

**Bank:** Zenith Bank



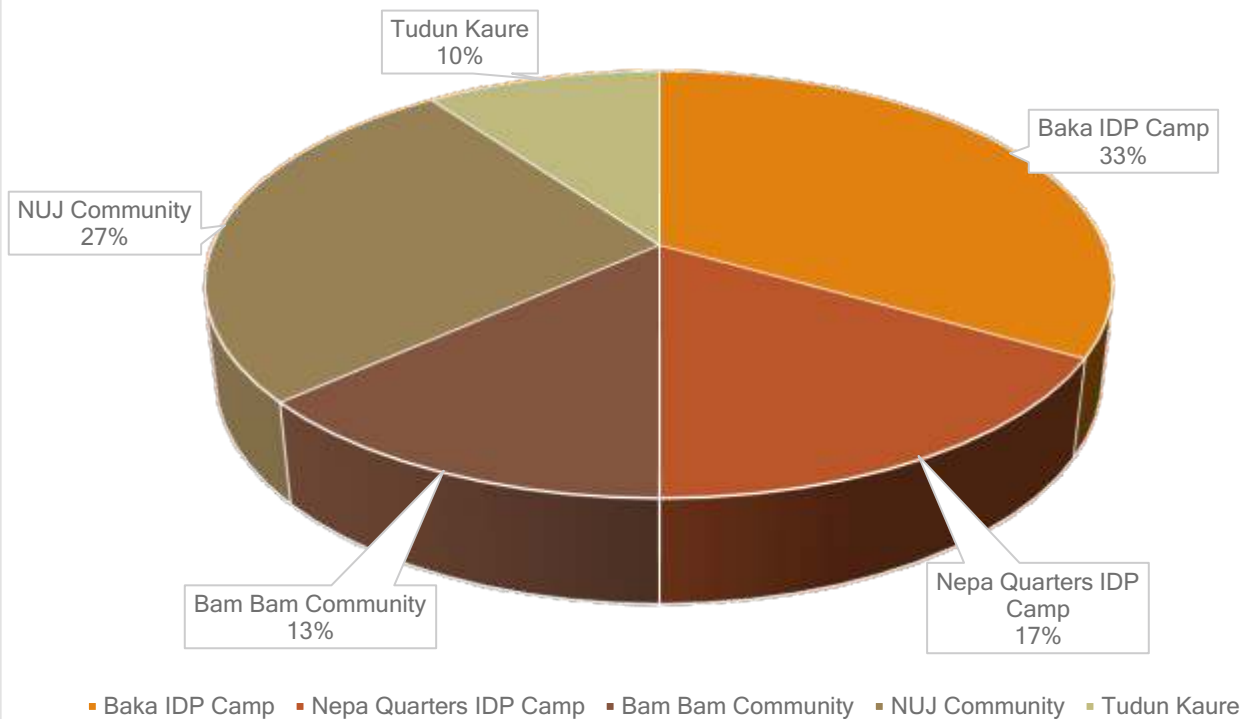
Christmas Kitchen distribution at Baka IDP Camp Makurdi, Benue State







Targeted Locations







*A beneficiary smiling while clutching her items in excitement.*



*Executive Director CLHEI, Dr. Helen Teghtegh flanked by children in the Baka IDP Camp*

# SUCCESS STORIES

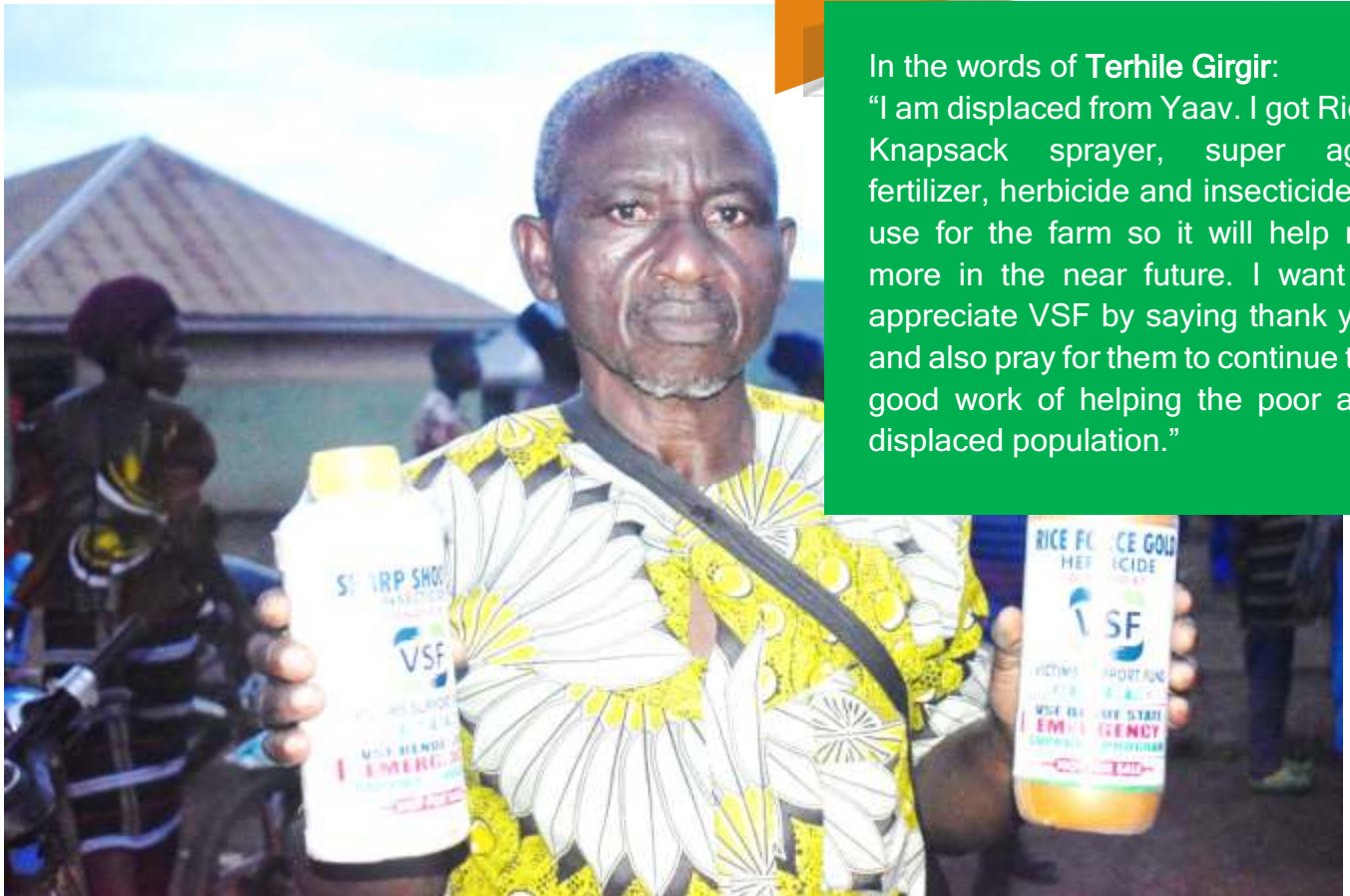


In the words of Elizabeth Ejeh;  
“During the crisis in Oju, they broke into my shop and stole a lot of items. I like the sewing machine I have received, with it I can start a new life. I will use my new machine to sew and make a living out of it. I appreciate VSF for providing me with a sewing machine to start again.”



In the words of **Kaduna Atundu Ahule** who was displaced as a result of the crisis and taking shelter in Jato-Aka;  
“I got a 25kg Knapsack sprayer, a bag of Rice, Sharp shooter (Insecticides), Rice force (Herbicide), Super agro liquid fertilizer to use and farm. I want to thank God for the gift of today and VSF for the show of love. I am hoping that when I use the items to farm, I will gain more in the future and have enough to eat and also reduce my level of suffering.”





In the words of **Terhile Girgir**:  
 “I am displaced from Yaav. I got Rice, Knapsack sprayer, super agro fertilizer, herbicide and insecticide to use for the farm so it will help me more in the near future. I want to appreciate VSF by saying thank you and also pray for them to continue the good work of helping the poor and displaced population.”

## THE TRANSFORMATIVE IMPACT OF CONDITIONAL CASH TRANSFER ON ORTESE HEMBADOON

During the reporting period, Community Links and Human Empowerment Initiative (CLHEI) identified Ortese Hembadoon, a 36 year old caregiver who earned her living through farming. She lives in Ihyarev, Utange community with her husband and two kids. During need assessment for conditional cash transfer, and administration of caregiver's access to emergency funds tool, CLHEI discovered that she was one of the most vulnerable caregivers. She narrated that they find it difficult to eat a balanced ration in the house and sometimes she could miss drug pick up because of lack of funds.

CLHEI was able to grant her Conditional Cash Transfer as she was enrolled on OVC iCARES project with funding from APIN Public Health Initiative. CLHEI after administering Caregivers access to emergency funds tool was able to identify Ortese Hembadoon as one of the most vulnerable beneficiaries and carried out need assessment and supported her with Conditional Cash Transfer of 20,000 to enable her start up viable and lucrative micro business that will help her fend for the basic needs of the family.





***CLHEI during need assessment with Hembadoon Ortese***

CLHEI used this approach of intervention because of the pathetic situation of Hembadoon as she could not have access to emergency funds to cater for emerging issues like health care, food, school fees and other pressing needs of the family. There was no previous intervention before CLHEI enrolled her on OVC iCARES project to support her to start up viable micro-business.

Hembadoon Ortese embarked on the business of selling palm oil where she started with ten litres and later graduated to 20 litres after higher rate of turnover. During one of the monitoring visits at the house of Ortese Hembadoon in her words she said *"I am thankful to God for the benefits of this program in my life, the trade I now engage in is helping me feed and fend for my children properly. I have*

*also cultivated a cassava farm. I also pray for Community Links, that God should continue to support the works of their hands and empower them more to reach out to others in need. You will continue to be in my prayers."*

She expressed her gratitude to the organization for finding her worthy of such help. She confessed that now, her children school fees can be paid without issues; they can as well access health care and provide the basic necessities of the family. She showed CLHEI a cassava farm and explained that they are all proceeds she has acquired from interest realized from the micro business she embarked on with help from CLHEI. She was so empathic saying, what would have been of her if the intervention had not come. She concluded

by saying may the almighty God continue to endow the organization with more resources so that this help can be given to

another fellow and promised to be with the organization in prayers.



*Hembadoon been presented her cash transfer to enable her setup a viable business in Ushongo LGA, Benue State*



*Hembadoon's business place been visited by CLHEI Monitoring team during one of her routine visits*

**TERHILE TEGHTEGH MOVING FROM GRASS TO GRACE**

During the reporting period, Community Links and Human Empowerment Initiative (CLHEI) identified Terhile Teghtegh a 16 year older VC who lived in Mbaaka community with his mother. His family was not having enough to cater for him.

The pathetic side of his story was that, his father is late and his mother was so poor that they only live on the few crops they harvest from the farm as their food and part sold as a source of income for the household. During home visit for service provision and need assessment for enrolment into vocational skills and apprenticeship training.

CLHEI discovered that the household was one of the most vulnerable households thereby deserving some form of intervention. The caregiver narrated how they find it difficult to eat a balanced ration in the house and sometimes his son could miss drug pick up because of lack of funds.

Community Links and Human Empowerment Initiative (CLHEI) with funding from APIN Public Health Initiative was able to enroll Terhile Teghtegh into Vocational skills and apprenticeship training (Tailoring) at Lobi Kartyo market in Mbaawe community where a memorandum of understanding was signed with Mr. Uganor who was providing the service.

After successfully completing training with demonstrated expertise in Tailoring, Terhile TeghTegh was kitted with a sewing machine to go and start a Tailoring business of his own.

CLHEI used this approach of intervention because of the pathetic situation of the

household as they could hardly have access to funds to cater for emerging issues like health care, food, school fees and other pressing needs of the family.

There was no previous intervention before CLHEI enrolled her on OVC aCARES project to support and train him in vocational skills and apprenticeship training to get a lifesaving skill that will fend for his needs and that of the household.

After collecting his start up kits, he went back and continued with his boss and after few months he started sewing at home because of lack of funds to open a shop of his own. He was able to raise money because of the level of patronage from his community. He was able to reenroll back into school, bought a goat and chicken and never missed appointment and this is clearly seen as he is now virally suppressed.

During one of the monitoring visits at his house in Mbaaka community, his mother who was full of joy because of the intervention thanked the organization and in her words she said ***"I am grateful to God for giving you people the opportunity to identify with us. During your intervention, my son benefitted from the start-up kit distribution done by Community Links, now when he goes out to work, he comes back home with money to support the entire household and meet needs."***

She expressed her gratitude to the organization for seeing their plight and coming to their aid. She concluded by saying that, she doesn't have anything to give to the organization, but her sincere prayers are with the organization.





*Terhile Teghtegh at his apprentice place working on a dress during routine visit by CLHEI Monitoring team in Ushongo LGA, Benue State.*

d



*Terhile Teghtegh working on his sewing machine at home following CLHEI's distribution of starter kits*



*Terhile reenrolled back into school using funds from his tailoring skills*

**IEMBER TORTIV** is a 26 years old lady displaced by the farmer-herder clashes and currently residing at the Ortese IDP Camp, Guma LGA of Benue State.

“Before displacement, I have never voted in any elections, because I didn’t have PVC. I also did not know how to even get PVC. But then, CLHEI came to our camps and spoke to us about voting, then helped us register for PVC and then brought the PVCs for us in the camp. I was so excited. Today I have voted, and I have voted for the candidate I want without any problems. I am so happy”

**BENJAMIN NYIETAGH:** “I am grateful to Community Links for helping me register for PVC. All these while I couldn’t find my way to where they register for PVC because, the place is far and also when you get there you will have to stand on the line for many hours, sometimes they ask you to come back the next day. But CLHEI came one day and asked us for those who don’t have PVC, so I joined the line and they registered me too. Close to the elections, they came together with INEC and gave us our PVCs, I also collected my own. I have voted, and am very happy about this, because I voted inside the camp and I voted my choice unlike before that people will force us to vote who they want.”





*lember casting her vote during the presidential elections at the Ortese IDP camp in Guma LGA.*



*Benjamin undergoing the voter accreditation process during the presidential elections at the Ortese IDP Camp in Guma LGA*





*Accreditation process for voting at the Uikpam IDP Camp Voting Centre in Guma LGA, Benue State*



*Sample of T-shirts produced bearing the GOTV message*

# INDEPENDENT AUDITOR'S REPORT



Date:.....

## **COMMUNITY LINKS AND HUMAN EMPOWERMENT INITIATIVE INDEPENDENT AUDITORS' REPORT TO MEMBERS OF THE COMMUNITY LINKS AND HUMAN EMPOWERMENT INITIATIVE**

### **AUDITORS OPINION:**

We have conducted the Audit of "COMMUNITY LINKS AND HUMAN EMPOWERMENT INITIATIVE" for the year ended 31<sup>st</sup> December, 2023.

In our opinion, the Financial Statements of the **NGO** for the year ended, 31<sup>st</sup> December, 2023.

- Give a fair view of the state of Affairs of the **NGO**.
- Have been prepared in accordance with the requirements of Companies and Allied Matters Act, (CAMA) 2020.
- The Financial Statements have been prepared in compliance with the Statement of Accounting Standards (SAS 32) issued by the Financial Reporting Council of Nigeria.
- Have been prepared in accordance with international Financial Reporting Standards (IFRS).

### **AUDIT SCOPE**

We carried out our audit exercise at the NGO's premises. We undertook 100% vouching of Payment Vouchers, in addition, specified procedures were used.

### **AREAS OF FOCUS**

The following were areas of focus for our audit

- Recognition of Income
- Receipts impact on Payments
- Management override of controls
- Compliance with laws and regulations
- Compliance with Agreements signed by UNDP, NDI, APIN, VSF and IA



## COMMUNITY LINKS AND HUMAN EMPOWERMENT INITIATIVE

### HOW OUR AUDIT ADDRESSED THE AREAS OF FOCUS

We conducted substantive and compliance tests to fully understand the operations of the Company. We held interviews with some staff handling specific assignments and utilized the outcome. We interfaced with some key management staff, issued observations and obtained responses, issued Draft Financial Statements, discussed with Management.

These measures substantially guided us to arrive at forming an opinion on the Financial Statements.

### AUDITOR'S RESPONSIBILITY

Our responsibility is to express independent opinion on these Financial Statements based on our audit. We conducted our audit in accordance with applicable law and international standards on auditing (ISA) 700. Those Standards require us to comply with Auditing Practices Board's Esthetical Standards for Auditors.

An audit involves performing procedures to obtain audit evidence about the amounts and disclosures in the Financial Statements. The procedures selected depend on the Auditor's Judgment, including the assessment of the risks of material misstatement of the Financial Statements, whether due to fraud or error. In making these risk assessment, the Auditor considers Internal Control relevant to the entity's preparation and fair presentation of the Financial Statements in order to design audit procedures that are appropriate in the circumstances, but not for the purpose of expressing opinion on the effectiveness of the Entity's Internal Control.

An audit also includes evaluating the appropriateness of accounting policies used and the reasonableness of accounting estimates made by the council, as well as evaluating the overall presentation of the Financial Statements.

We believe that the audit evidence we have obtained is sufficient and appropriate to provide a basis for our opinion.

**Sir Akor Ikpam KSS, PhD, FCNA, FIICA, CFC, mimc, KSM**

FRC/2014/ANAN/00000010483

*Managing Partner*

For and on behalf of:

**Akor Ikpam & CO. PL 231**

(Certified National Accountants)

Makurdi, Nigeria

12<sup>TH</sup> February, 2024.





# PARTNERS & FUNDERS







**Head Quarter Office:**

No. 2 Gordon Esa Street, Off Atom-Kpera Road,  
Ankpa Quarters Makurdi, Benue State, Nigeria.

**Field Offices:** Tudun Kaure Street, Lafia, Nasarawa State  
Ostragum Road, Ushongo Town, Benue State

**Website:** [www.communitylinks.org.ng](http://www.communitylinks.org.ng)



@communitylinks.org.ng



@LinksNG, @CLHEIClimate

**LinkedIn - Community Links NG**



Community Links NG